



9 Anthony Court Melton West VIC

4 2 6

Situated in an ideal location this property sits in close proximity to schools of all levels including Wedge Park Primary School, Melton Secondary College, Saint Catherine of Sienna Primary School and Saint Francis College, walking tracks, Navan Park, public transport and Woodgrove Shopping Centre. With a grand frontage and outstanding upgrades this property is one not to miss.

As soon as you walk up to the front of this immaculate home you are met with a stunning front façade, with a Colourbond roof, front patio, federation style fencing and a large double carport and a stunning front lawn which has been meticulously cared for. This all leads you to the front door which also features a security screen, stepping inside you will immediately notice the nine-foot ceilings, upgraded skirting boards and cornicing that extend throughout the home.

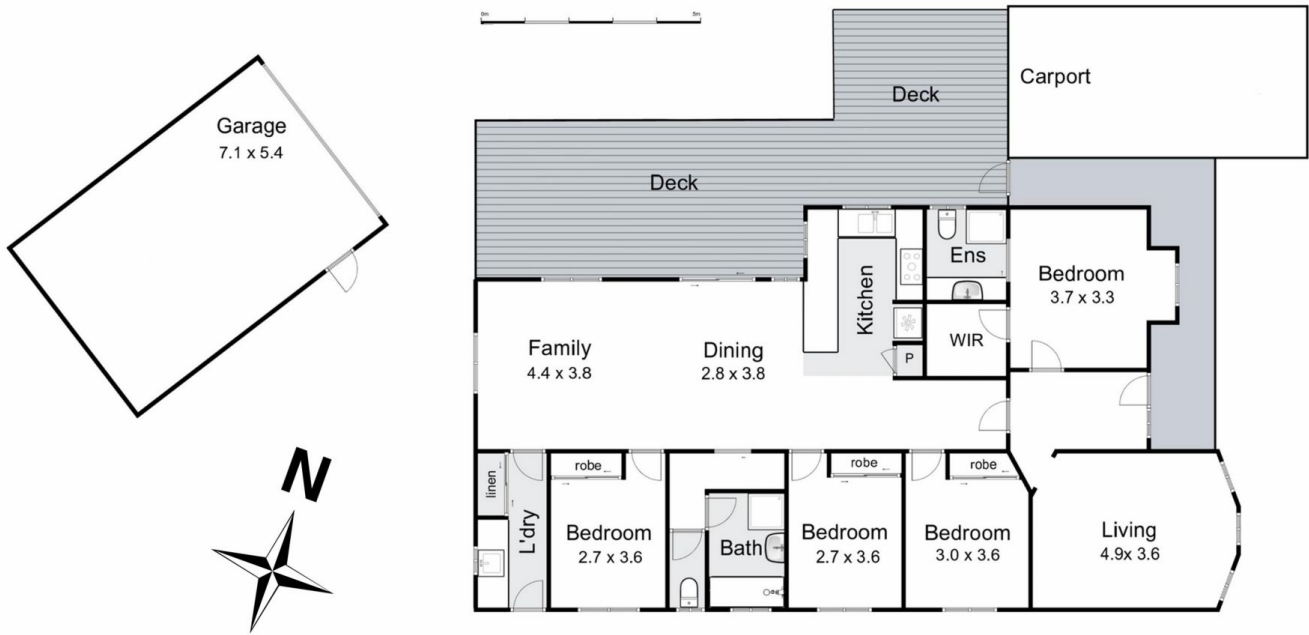
Price : \$ 730,000
Land Size : 800 sqm
View : <https://www.ypa.com.au/8412837>



Shane Spiteri
0488 980 115



Tahlia Hall
0422 419 589



9 Anthony Court, Melton West

UPA

Whilst every attempt has been made to ensure the accuracy of the floor plan contained here, measurements of doors, windows, rooms and any other items are approximate and no responsibility is taken for any error, omission, or mis-statement. This plan is for illustrative purposes only and should be used as such by any prospective purchaser. The services, systems and appliances shown have not been tested and no guarantee as to their operability or efficiency can be given.

open2view.com.au