



16 Vacluse Avenue Gladstone Park VIC

3 1 4

Positioned in a convenient pocket of Gladstone Park, this well-kept home is set on a generous 791sqm (approx.) allotment ? offering the perfect blend of family living and exciting future potential!

Price : \$ 810,000
Land Size : 791 sqm
View : <https://www.ypa.com.au/8409041>

Step inside to discover a light-filled layout featuring three well-sized bedrooms, a spacious front lounge, separate meals area, and a practical kitchen ready for everyday cooking or entertaining. A central bathroom and full-sized laundry add to the home's comfort and convenience.

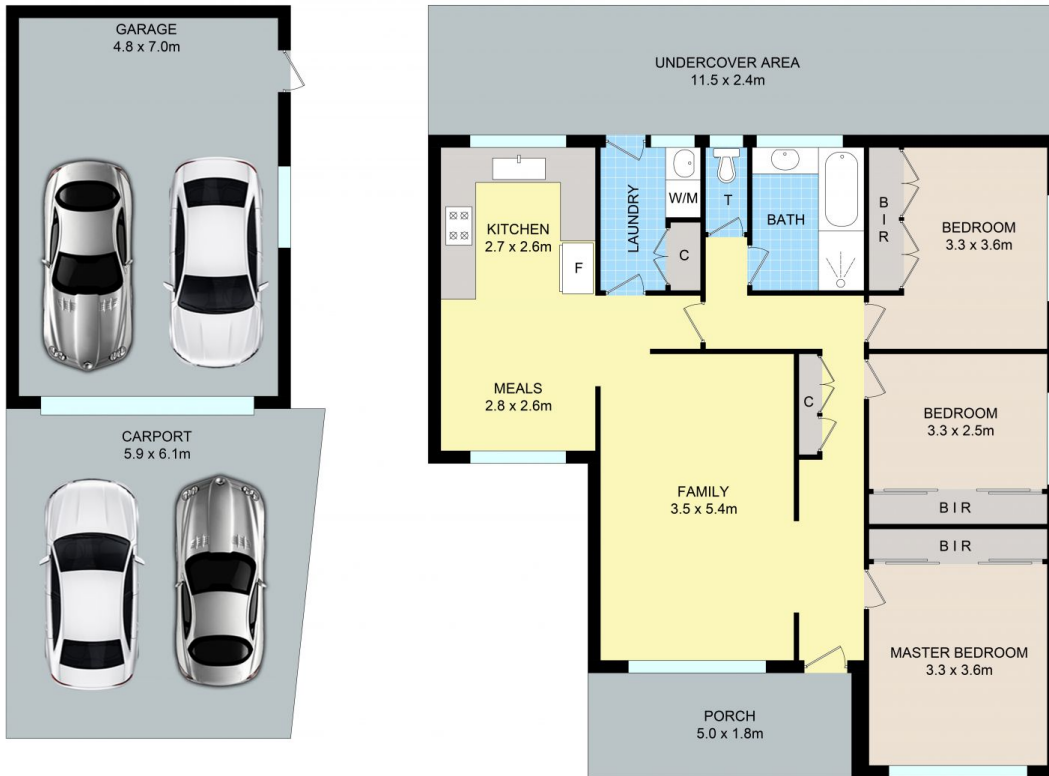
Outdoors, the expansive backyard is a dream for growing families ? with plenty of room for kids and pets to run and play, and loads of open space for entertaining or relaxing. A double garage plus a double carport ensure ample off-street parking.



Michael Sassine
0421 023 243



Luke Albioli
0403 700 003



16 Vacluse Ave, Gladstone Park

Disclaimer: Floor plan is for marketing purposes and is to be used as a guide only. Measurements are approximate and for illustrative purposes. Interested parties should make and rely on their own enquiries or refer to contract drawings for more accurate information.