



1/15 Riddell Street Westmeadows VIC

3 1 2

SOLD AT AUCTION BY JASON PADULA!

Go to Jason Padula Real Estate on Facebook and YouTube, for all the Auction campaign highlights!

"Location, Location, Location"

Herein lies an incredible opportunity to purchase this low-maintenance 3 bedroom home (Circa 1970 approx.) almost at the very end of picturesque Riddell Street, along the banks of the Moonee Ponds creek + trail!

Gently elevated and set on 345m² (approx.), the property boasts its own separate driveway able to accommodate up to 3 cars, leading to a near double-sized garage beautifully converted to a work-from-home or separate living space, complete with engineered flooring and dual door access.

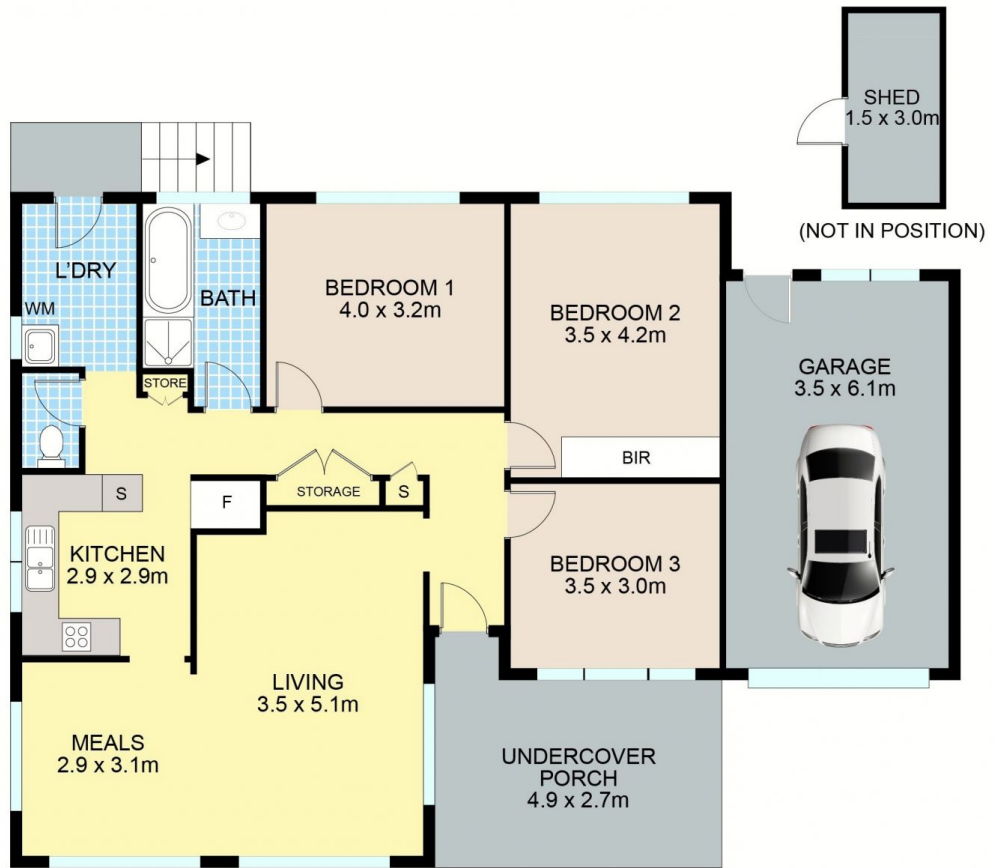
Price : \$ 540,000

Land Size : 345 sqm

View : <https://www.ypa.com.au/8408407>



Jason Padula
0402 149 436



1/15 Riddell Street, Westmeadows

Disclaimer: Floor plan is for marketing purposes and is to be used as a guide only. Measurements are approximate and for illustrative purposes. Interested parties should make and rely on their own enquiries or refer to contract drawings for more accurate information.