



## 449 Browns Road Rye VIC

3 2 3

Tucked away in a serene pocket of Rye and embraced by the natural beauty of a native bush block, this character-filled coastal home is the perfect escape for those seeking a relaxed Peninsula lifestyle. With pristine ocean beaches, renowned wineries, and the vibrant shops and cafes of Rye just moments away, the property offers a coveted blend of seclusion and convenience.

Wrapped in a classic timber-clad exterior that blends seamlessly with the landscape, the home opens to an expansive deck area-ideal for sun-soaked mornings, afternoon barbecues, or simply taking in the sounds of nature. With a single carport, additional off-street parking bay, and a separate storage shed, the property ensures space and practicality for both full-time living and weekend getaways.

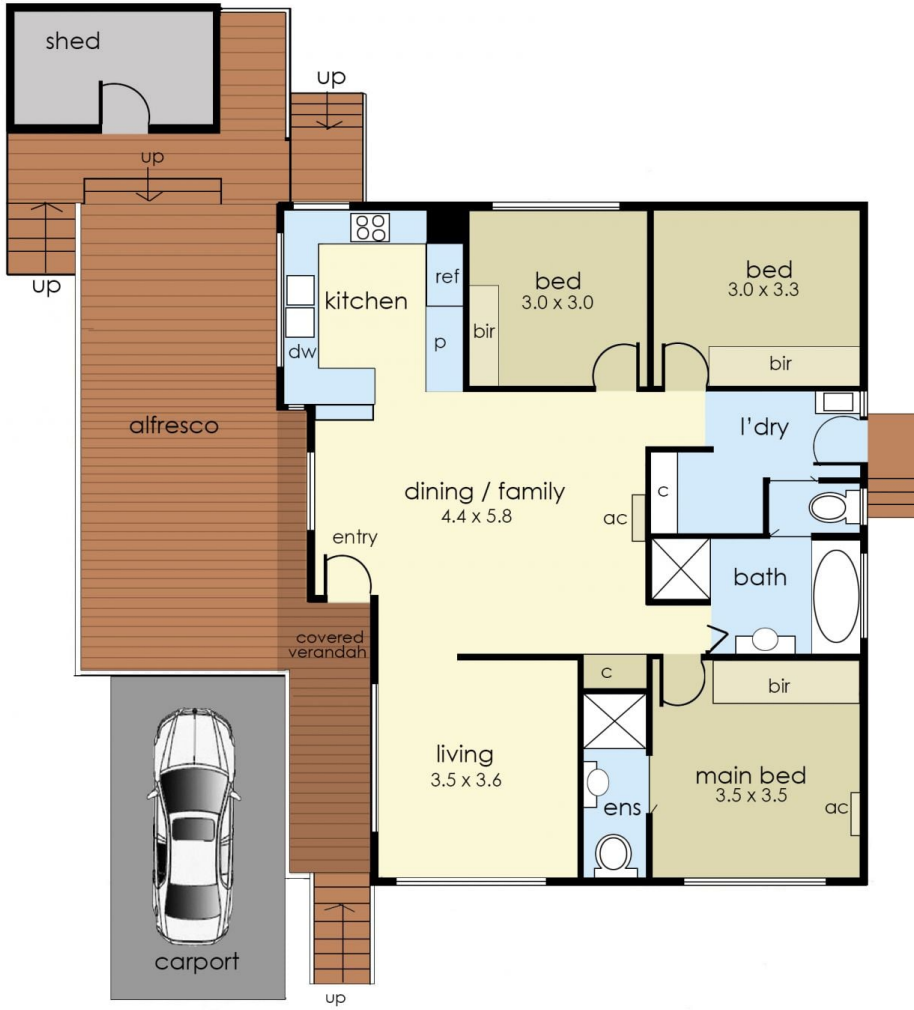
**Price** : \$ 785,000  
**Land Size** : 876 sqm  
**View** : <https://www.ypa.com.au/8405509>



**Jade Springer**  
0437 410 791



**Kelsie Janssen**  
0417245204



Internal living area  
approx: 12 squares

Carport area  
approx: 2 squares

Decking / alfresco  
approx: 6 squares

Total area  
approx: 20 squares

## 449 Browns Road, Rye

© Produced by DND Floor Plans

This floorplan is for illustration purposes only and no warranty is given to its accuracy. Purchasers are advised to carry out their own investigations.