

## 6 Calita Avenue Tarneit VIC

4 2 2

This immaculately presented four-bedroom home offers a functional floorplan, modern features, and a prime location in the heart of Tarneit Gardens Estate - just 30km from Melbourne's CBD. Designed with family living in mind, this property provides multiple living zones, quality fixtures, and everyday comfort.

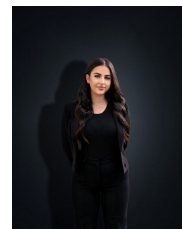
**View** : <https://www.ypa.com.au/8403854>

### Property Highlights:

- Four spacious bedrooms plus a dedicated study
- Master bedroom with walk-in robe and private ensuite
- Remaining bedrooms fitted with built-in robes
- Well-equipped kitchen featuring stainless steel appliances, gas cooktop, dishwasher, pantry, and breakfast bench
- Two separate living areas including a formal lounge and open-plan family/meals area
- Outdoor alfresco space perfect for entertaining
- Central bathroom with separate bath and shower



**Ashley Gates**  
0424 267 675



**Stefanie Zahra**  
0406 871 722