



17 Thomson Terrace Rye VIC

3  1  3 

Tucked away in a peaceful Rye pocket just moments from Tyrone Foreshore, this charming coastal hideaway promises the relaxed lifestyle so many crave. Whether you're seeking a holiday retreat, a smart investment, or the perfect first home by the sea, this delightful property delivers on every front.

Set amidst thriving coastal gardens and bathed in beautiful natural light, the home has a welcoming personality from the moment you arrive. Inside, its bright, breezy atmosphere blends nostalgic beach house character with an effortless coastal aesthetic. The layout is refreshingly straightforward—three comfortable bedrooms, a tidy central bathroom, and a relaxed open-plan kitchen, living and dining space that's ideal for slow mornings and sun-soaked afternoons.

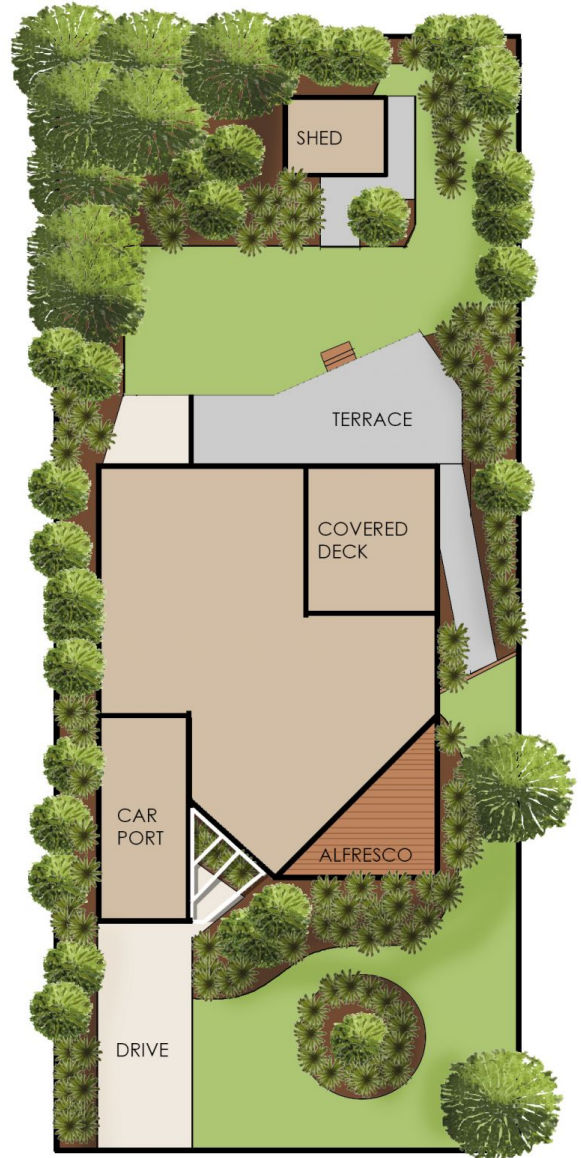
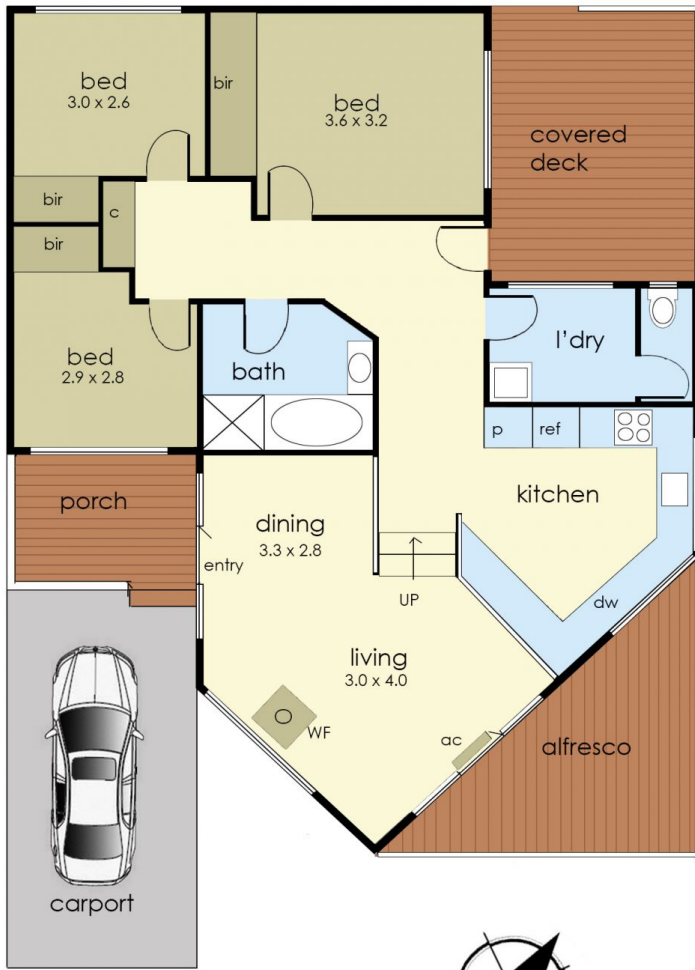
Price : \$ 802,500
Land Size : 604 sqm
View : <https://www.ypa.com.au/8387815>



Jade Springer
0437 410 791



Kelsie Janssen
0417245204



Internal living area
approx: 11 squares

Deck porch and
alfresco areas
approx: 5 squares

Carport area
approx: 2 squares

Total area
approx: 18 squares

17 Thomson Terrace, Rye

© Produced by DND Floor Plans

This floorplan is for illustration purposes only and no warranty is given to its accuracy. Purchasers are advised to carry out their own investigations.