

## 108 Westmelton Drive Melton West VIC

4 2 2

This beautiful home is situated on a 817m<sup>2</sup> (approx.) allotment in the heart of Melton West just moments away from all amenities, including public transport, schools of all levels including Wedge Park Primary School, Melton Secondary College, Saint Catherine of Sienna Primary School and Saint Francis College, Woodgrove Shopping Centre, milk bar, parklands, walking tracks, easy freeway access and sits in close proximity to Melton Waves Leisure Centre. Whether you are looking to move in or invest, this property is a wonderful opportunity to start or add to your property portfolio. You don't get blocks this size anymore in Melton!

Upon entry you are greeted with the master bedroom, which is generously sized and features an upgraded ensuite with porcelain tiling, new shower and also a walk-in robe with built in cabinetry. The remaining three bedrooms

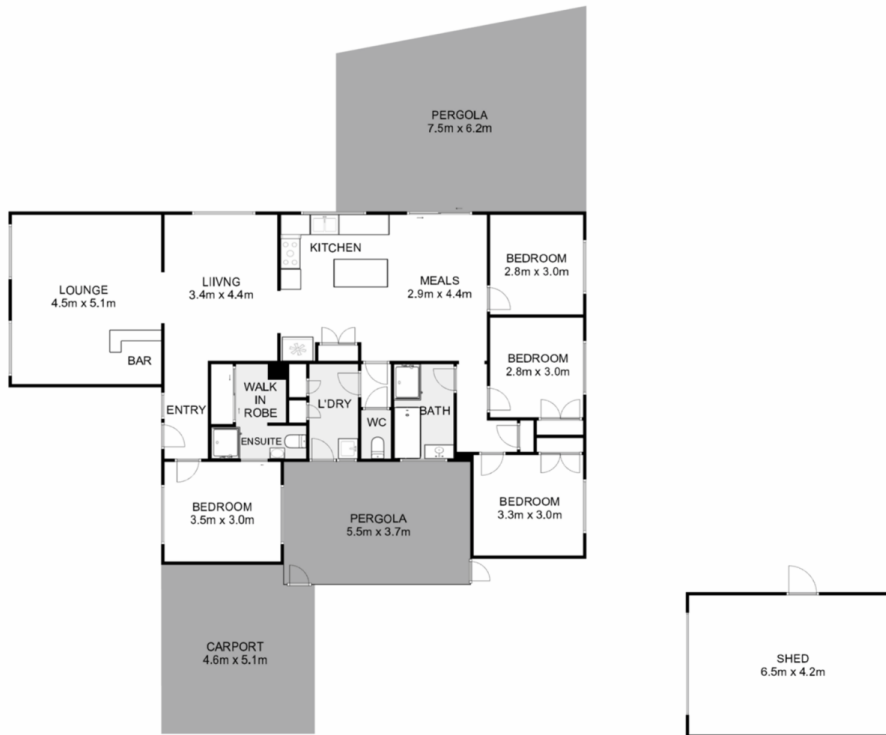
**Price** : \$ 648,000  
**Land Size** : 817 sqm  
**View** : <https://www.ypa.com.au/8383197>



**Shane Spiteri**  
0488 980 115



**Ricky Frew**  
0402 007 100



## 108 Westmelton Drive, Melton West



Whilst every attempt has been made to ensure the accuracy of the floor plan contained here, measurements of doors, windows, rooms and any other items are approximate and no responsibility is taken for any error, omission, or mis-statement. This plan is for illustrative purposes only and should be used as such by any prospective purchaser. The services, systems and appliances shown have not been tested and no guarantee as to their operability or efficiency can be given.

