



9 Almond Close Werribee VIC

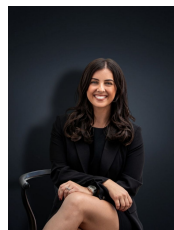
3 2 2

Tucked away in a quiet court, this beautifully presented home at 9 Almond Close, Werribee offers the ideal balance of space, comfort, and lifestyle convenience. It will suit perfect for families, first-home buyers and investors alike.

Price : \$ 640,000

View : <https://www.ypa.com.au/8383106>

Boasting three spacious bedrooms, including a master with ensuite and walk-in robe, a central bathroom, and a separate study space upstairs, that could double as a child friendly play area. Freshly painted throughout and featuring brand-new carpets, the home feels refreshed and ready for you to move straight in.



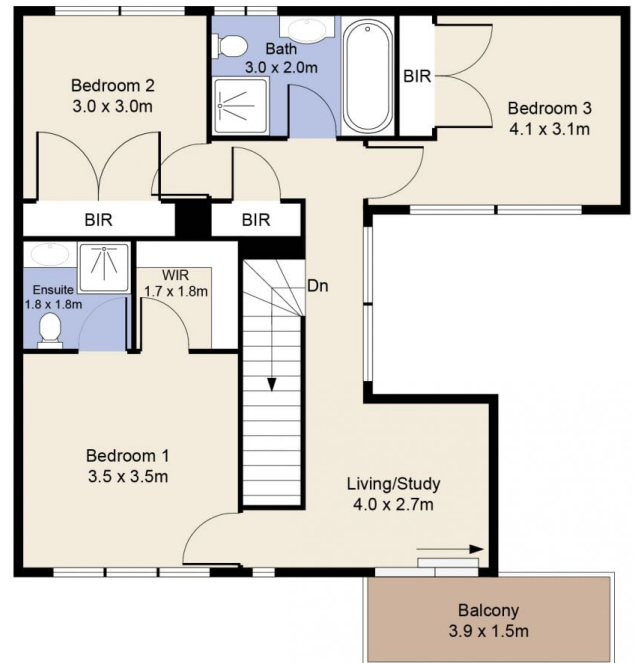
Kirsty Cunningham
0414 344 475



Ibrahim Ahmed
0449 119 577

Enjoy the versatility of two generous living areas, while the central kitchen connects effortlessly to the open plan meals area and out to a large, decked outdoor entertaining space. Ideal for year-round gatherings. All of this is framed by beautifully maintained gardens, creating a peaceful and

9 Almond Close, WERRIBEE



Whilst every attempt has been made to ensure the accuracy of the floor plan contained here, measurements of doors, windows, rooms and any other items are approximate and no responsibility is taken for any error, omission, or mis-tatement. This plan is for illustrative purposes only and should be used as such by any prospective purchaser. The services, systems and appliances shown have not been tested and no guarantee as to their operability or efficiency can be given.