



14 Mallow Street Brookfield VIC

4 2 2

Located in a quiet pocket of Brookfield, this property sits within close proximity to walking tracks, playgrounds, newly opened Binap Primary School, established Melton Christian College and only moments away from freeway access, Melton Train Station, Station Square Shopping Centre and so much more!

From the moment you arrive at the home, you will be impressed by the freshly updated gardens, while the façade sets the tone for the properties aesthetic appeal. As you enter through the front door you are met with a warm and welcoming atmosphere from the combination of a neutral colour palette and tiles which flow throughout. The master bedroom is situated at the front of the home, which is generously sized and boasts a walk-in robe and bright ensuite.

Continuing through the property you are greeted by the beautiful kitchen, with plenty of bench space, tiled

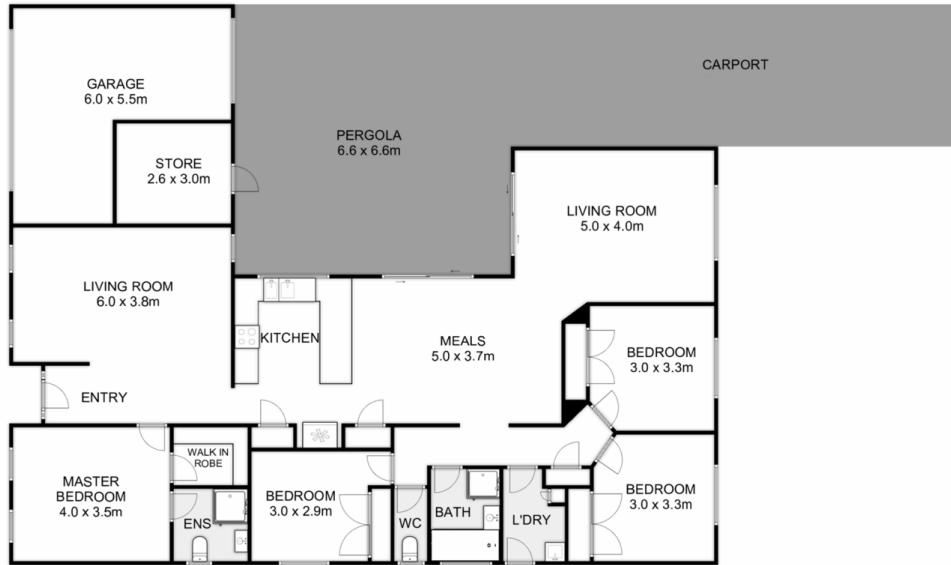
Price : \$ 615,000
Land Size : 512 sqm
View : <https://www.ypa.com.au/8377235>



Ryan Anders
0434 900 300



Cheyenne Kollar
0484 385 522



14 Mallow Street, Brookfield



Whilst every attempt has been made to ensure the accuracy of the floor plan contained here, measurements of doors, windows, rooms and any other items are approximate and no responsibility is taken for any error, omission, or mis-statement. This plan is for illustrative purposes only and should be used as such by any prospective purchaser. The services, systems and appliances shown have not been tested and no guarantee as to their operability or efficiency can be given.

