



6 Newfoundland Circuit Bonnie Brook VIC

3 2 1

YPA proudly presents this immaculately maintained and flawlessly presented brand-new residence, offering an exceptional lifestyle in the heart of the prestigious Woodlea Estate. Designed for modern living and crafted with attention to detail, this stunning home delivers the perfect blend of comfort, practicality, and style.

Set in a prime location with all amenities at your fingertips, enjoy close proximity to lush parklands, scenic wetlands, walking and cycling tracks, quality schools, shopping precincts, public transport, and a host of exciting upcoming developments that will only add to the area's appeal.

Features include:

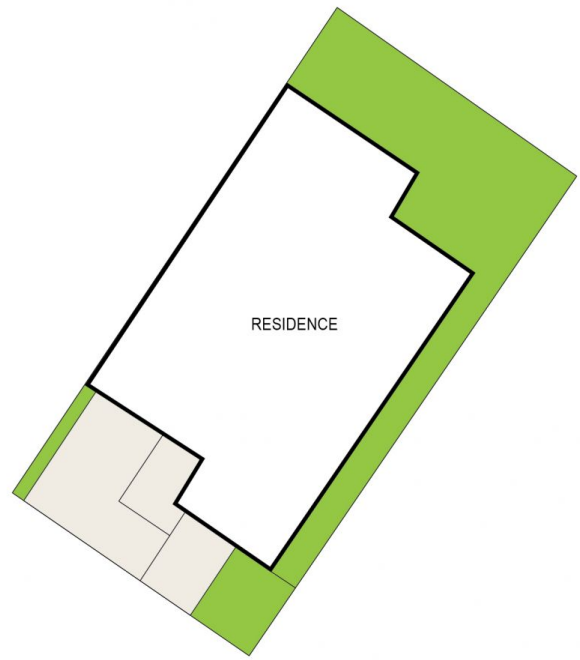
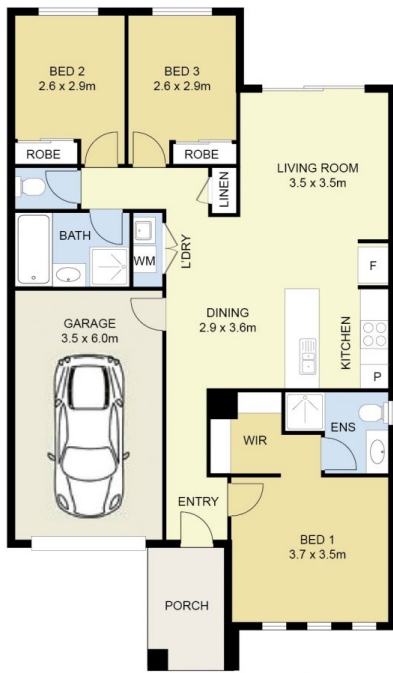
- ? Master bedroom showcases a walk-in wardrobe and ensuite with stone bench tops and quality fittings
- ? Additional two spacious bedrooms with built-in wardrobes

Land Size : 220 sqm

View : <https://www.ypa.com.au/8376671>



Kiarna Odgers
0406 730 232



SITE PLAN
(NOT TO SCALE)

6 Newfoundland Circuit, Bonnie Brook



DISCLAIMER : ALL DIMENSIONS ARE AN APPROXIMATION ONLY AND NO GUARANTEE IS GIVEN WITH RESPECT TO ACCURACY.