



## 150 Clipper Quay Safety Beach VIC

4 🏠 2 🚗 2 🚗

Positioned in the prestigious Hidden Harbour estate at Martha Cove, this immaculately presented four-bedroom home offers a lifestyle of coastal elegance, effortless living, and unbeatable marina access.

**Price** : \$ 1,095,000  
**Land Size** : 528 sqm  
**View** : <https://www.ypa.com.au/8375810>

Step inside to discover a light-filled interior featuring two expansive living areas, a spacious open-plan kitchen and dining zone, and seamless flow to an inviting alfresco area - perfect for entertaining or relaxing year-round.

The master suite is a true retreat with a large ensuite and built-in robe, while three additional bedrooms offer comfort and flexibility for families, guests, or a home office setup.

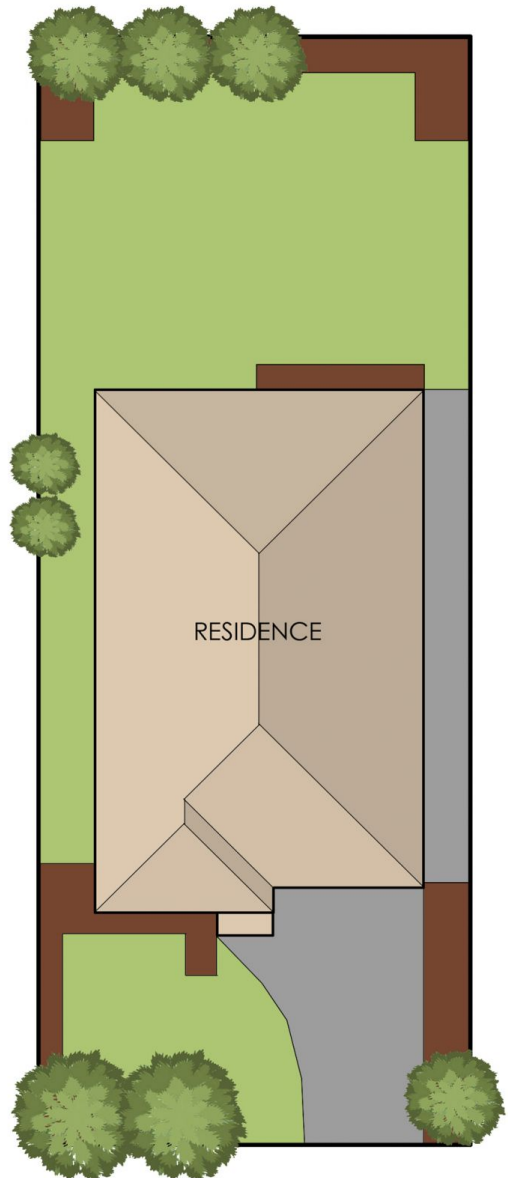
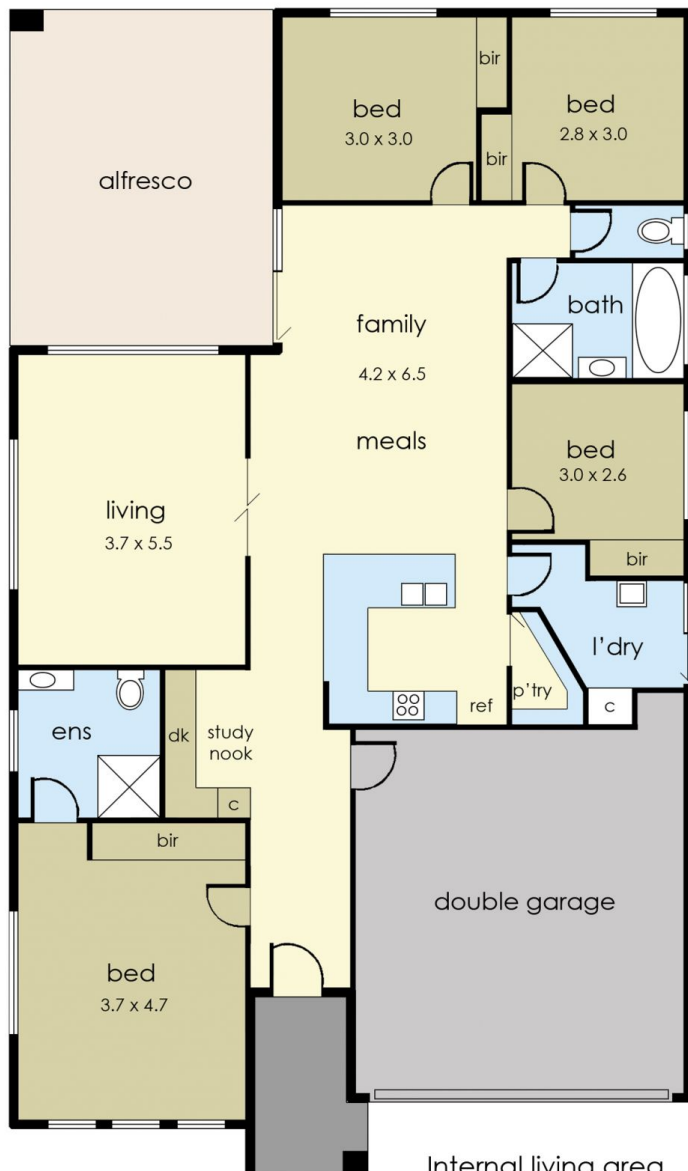
Comfort is assured with ducted heating and cooling throughout, and the double remote lock-up garage adds security and convenience. Best of all, the low-maintenance



**Ben Nutbean**  
0413 125 996



**Katrina Talarico**  
0420 778 404

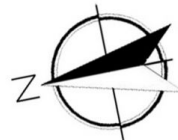


Internal living area  
approx: 20 squares

Garage area  
approx: 4 squares

Alfresco area  
approx: 3 squares

Total area  
approx: 27 squares



# 150 Clipper Quay, Safety Beach

© Produced by DND Floor Plans

This floorplan is for illustration purposes only and no warranty is given to its accuracy. Purchasers are advised to carry out their own investigations.