



1 Airmaid Drive Williams Landing VIC

4  2  2 

YPA Point Cook proudly presents this immaculate and stylish family home, thoughtfully designed to offer the perfect balance of luxury, functionality, and everyday comfort in one of Williams Landing's most desirable neighbourhoods. Set on a generous 454 sqm (approx.) corner block, this near-new residence boasts a commanding street presence and delivers space, light, and versatility throughout.

Offering four spacious bedrooms, including a beautifully appointed master suite with a walk-in robe and private ensuite, the home also features two generous living areas ? with the flexibility to convert the second living into a fifth bedroom, perfect for larger or multi-generational families. At the centre of the home, a gourmet kitchen impresses with sleek stone benchtops, stainless steel appliances, and a large island that anchors the open-plan dining and family

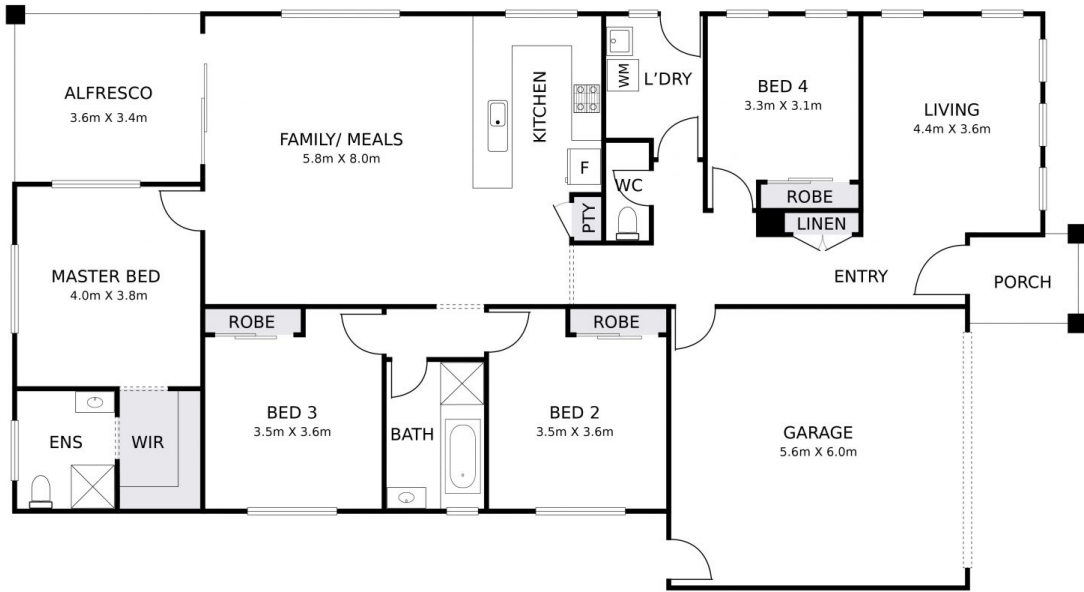
Price : \$ 865,000

View : <https://www.ypa.com.au/8361778>



Pardeep Chahal
0431 595 725

1 AIRMAID DRIVE, WILLIAMS LANDING



DISCLAIMER: PLEASE NOTE FLOOR PLAN IS INDICATIVE ONLY AND NOT DRAWN TO EXACT SCALE.
ALL DIMENSIONS ARE APPROX AND FOR ILLUSTRATION ONLY.

ypa