



3/179 Gisborne - Melton Road Kurunjang VIC

2 1 1

Situated in the ever-popular suburb of Kurunjang, this property sits within close proximity to everything it has to offer including schools of all levels, parks, walking tracks, milk bar and provides easy access to major roads making commuting to the city or to the country a breeze.

As you walk up to the property you will notice the freshly laid grass right at your front doorstep creating a pleasant welcoming to your new home. When you enter you are met with the massive front lounge room, with a split system for complete climate control and enough space on offer to cater for the whole family for a movie night or quiet night in. Adjacent to this sits the dining area which is overlooked by the kitchen featuring ample bench and cupboard space, double sink and freestanding oven and cooktop.

The property features two bedrooms which are both

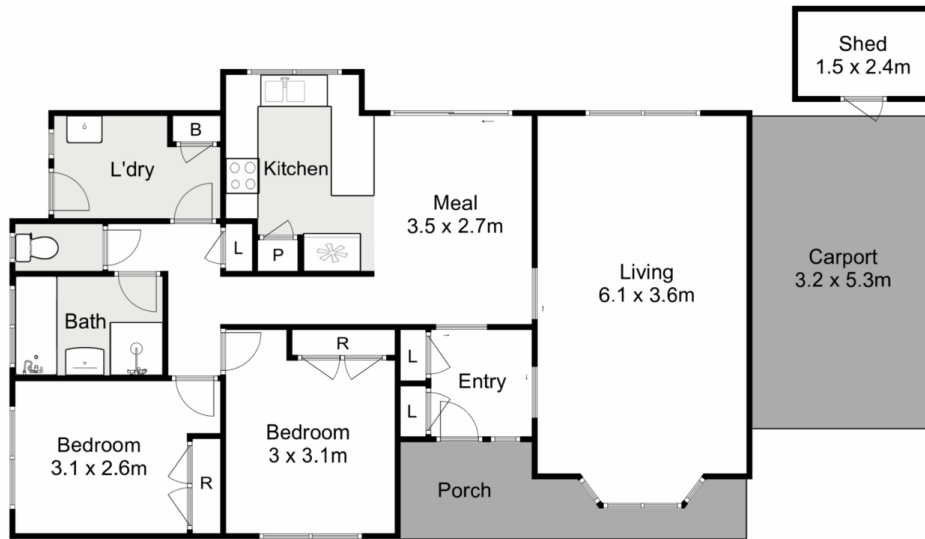
Price : \$ 391,000
Land Size : 226 sqm
View : <https://www.ypa.com.au/8361022>



Shane Spiteri
0488 980 115



Ricky Frew
0402 007 100



3/179 Gisborne-Melton Road, Kurunjang



Whilst every attempt has been made to ensure the accuracy of the floor plan contained here, measurements of doors, windows, rooms and any other items are approximate and no responsibility is taken for any error, omission, or mis-statement. This plan is for illustrative purposes only and should be used as such by any prospective purchaser. The services, systems and appliances shown have not been tested and no guarantee as to their operability or efficiency can be given.

