



## 19 Glenbrook Gardens BROOKFIELD VIC

5 2 4

Providing a rare and unique opportunity to grasp what Brookfield has to offer. Situated on a very generous allotment of 764m<sup>2</sup> (approx.) and within close proximity to local shopping complexes, schools of all levels including the brand new Binap Primary School and within walking distance to Melton Christian College, parks, leisure centre, public transport, freeway access and so much more. This wonderful property is a great opportunity for everyone.

Upon entering this outstanding family domain, you are met by the huge formal living room, with plenty of space on offer for the entire family to enjoy. Sitting adjacent to this is the main bedroom, generously sized and featuring a ceiling fan, walk in robe and a neat and tidy ensuite with larger shower. Further down the hall the second bedroom which is also generously sized features a ceiling fan and further accompanies the front living area creating a functional

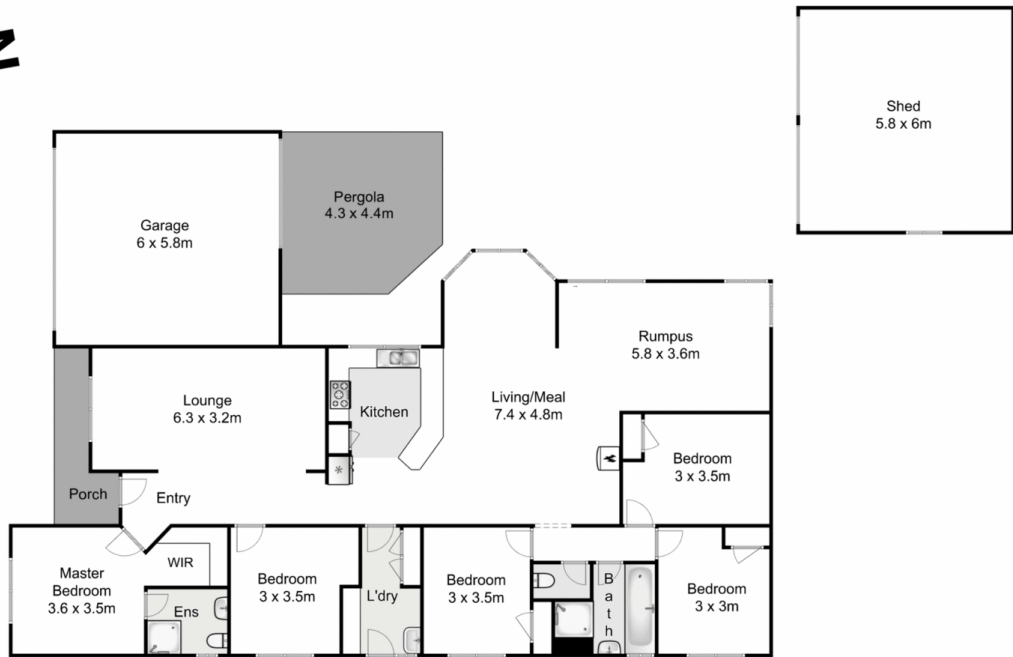
**Price** : \$ 725,000  
**Land Size** : 762 sqm  
**View** : <https://www.ypa.com.au/8351977>



**Shane Spiteri**  
0488 980 115



**Ricky Frew**  
0402 007 100



## 19 Glenbrook Gardens, Brookfield



Whilst every attempt has been made to ensure the accuracy of the floor plan contained here, measurements of doors, windows, rooms and any other items are approximate and no responsibility is taken for any error, omission, or mis-statement. This plan is for illustrative purposes only and should be used as such by any prospective purchaser. The services, systems and appliances shown have not been tested and no guarantee as to their operability or efficiency can be given.

