



## 1/30 Tarneit Road Werribee VIC

3 1 1

This beautifully maintained home, full of charm and character, is ideally located close to Werribee Train Station and only moments from the vibrant Werribee CBD, including shops, cafés, and restaurants.

Step inside and enjoy the stunning original timber floorboards, Art Deco decorative ceilings, and elegant cornices that showcase the home's timeless appeal.

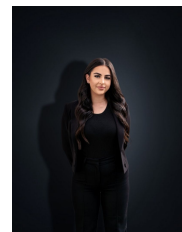
### Property Features:

- ? Three generously sized bedrooms, all with built-in robes
- ? Central bathroom with functional layout
- ? Spacious living room
- ? Modernised kitchen featuring gas cooking and ample storage
- ? Decked outdoor entertaining area and easy-care gardens - perfect for relaxing or entertaining
- ? Carport with off-street parking

View : <https://www.ypa.com.au/8350869>



**Ashley Gates**  
0424 267 675



**Stefanie Zahra**  
0406 871 722