



11 Endurance Way Point Cook VIC

3 2 2

Discover the perfect blend of contemporary design and functional family living in this freshly presented double-storey home, nestled within the prestigious Life Estate of Point Cook. Thoughtfully designed for comfort, convenience, and efficiency, this home is zoned to the highly sought-after Alamanda K-9 College, making it an ideal choice for growing families.

Step inside to a spacious open-plan living and dining area, seamlessly connecting to a gourmet kitchen featuring stone benchtops, a standalone gas cooktop, and a dishwasher. The low-maintenance front and backyard with artificial turf provide year-round greenery without the upkeep, while a spacious laundry adds everyday practicality.

Equipped with premium climate control, the home boasts a reverse cycle 16KW ducted heating and cooling system

Price : \$ 833,000
Land Size : 352 sqm
View : <https://www.ypa.com.au/8332264>

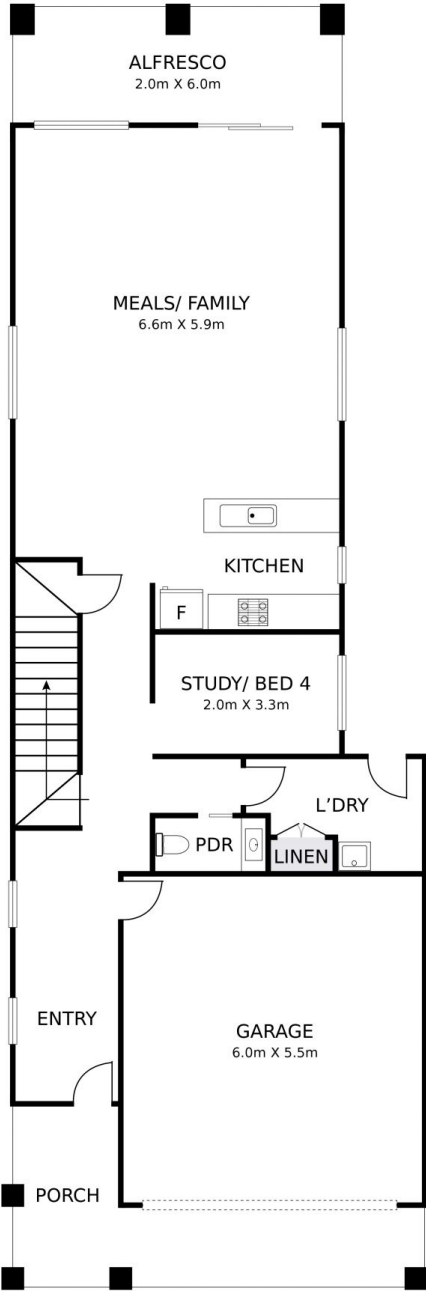


Nirav Gupta
0452 236 536

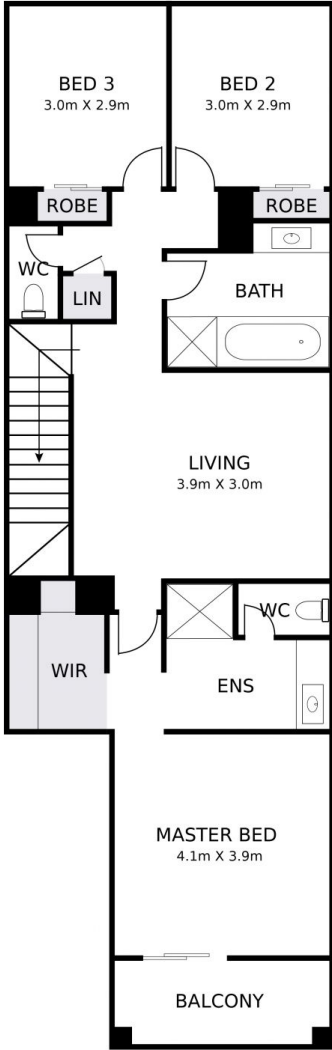


Pardeep Chahal
0431 595 725

11 ENDURANCE WAY, POINT COOK



GROUND FLOOR



FIRST FLOOR

DISCLAIMER: PLEASE NOTE FLOOR PLAN IS INDICATIVE ONLY AND NOT DRAWN TO EXACT SCALE. ALL DIMENSIONS ARE APPROX AND FOR ILLUSTRATION ONLY.

