



16 Leafy Road Werribee VIC

4  2  2 

Offering one week rent free!

Perfectly positioned in the sought-after King's Leigh Estate, this stylish and spacious family home offers a seamless blend of modern living, convenience, and comfort. Whether you're upsizing, relocating, or simply seeking more space, this home delivers an inviting lifestyle in a thriving, well-connected community.

Why You'll Love This Home:

? Spacious Accommodation: Four well-sized bedrooms, including a master suite with a walk-in robe & ensuite. The remaining bedrooms are fitted with double built-in robes / serviced by a stylish central bathroom and separate toilet.

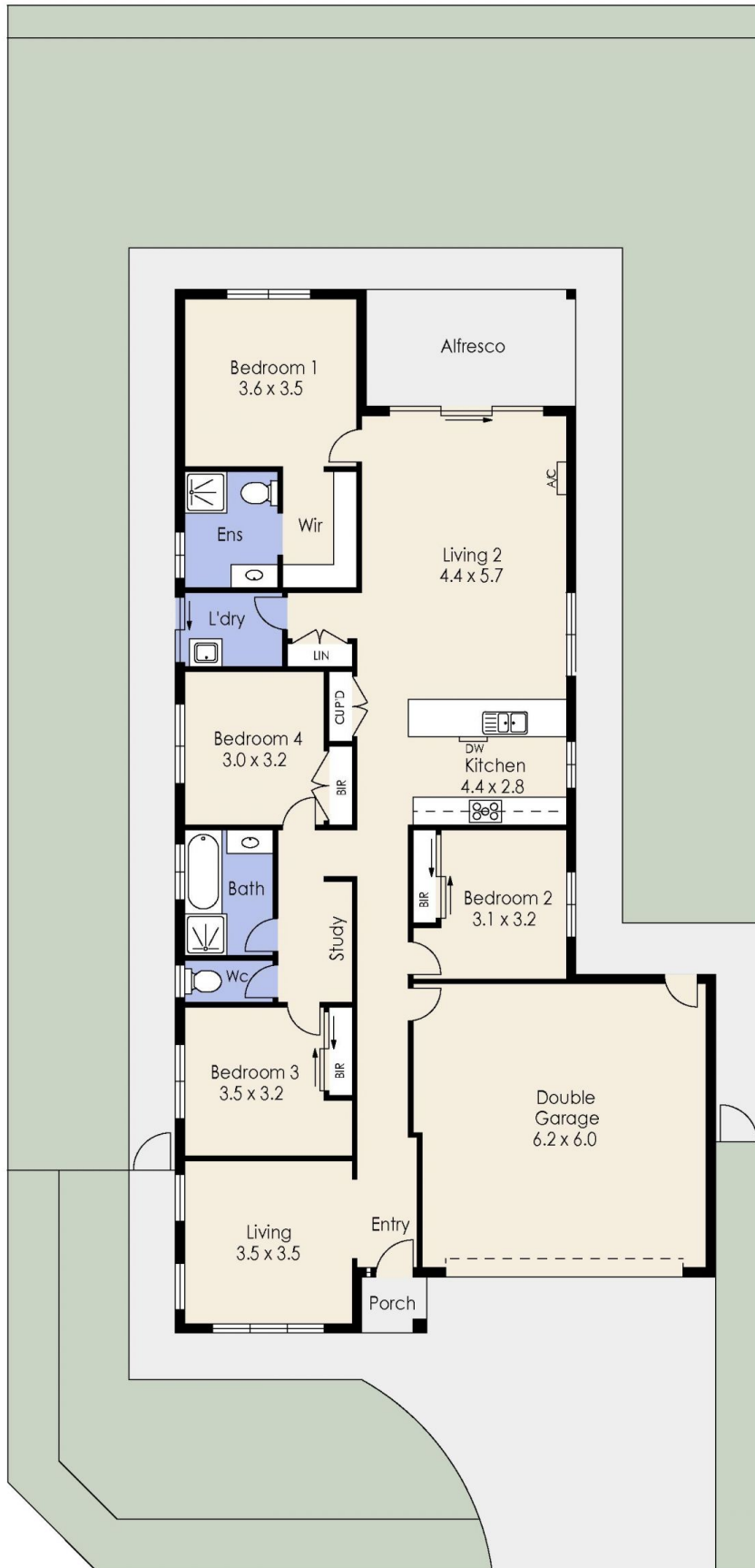
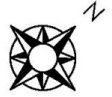
? Multiple Living Zones: Enjoy the flexibility of two living areas, with a secondary lounge upon entry and an

View : <https://www.ypa.com.au/8332024>



Victoria Peart
0406 551 777

16 Leafy Road, WERRIBEE



Whilst every attempt has been made to ensure the accuracy of the floor plan contained here, measurements of doors, windows, rooms and any other items are approximate and no responsibility is taken for any error, omission, or mis-statement. This plan is for illustrative purposes only and should be used as such by any prospective purchaser. The services, systems and appliances shown have not been tested and no guarantee as to their operability or efficiency can be given.