



2/9 Chircop Close Sydenham VIC

3 2 1

Discover the ideal home for effortless living in a highly sought-after location approx 15-minute walk to Watergardens Shopping Centre, Railway Station, Bus stops, Schools and various Medical Centres on Melton Hwy. Whether you're a first-time homebuyer or an investor, this proudly maintained family home offers convenience, comfort and low maintenance

Price : \$ 593,000

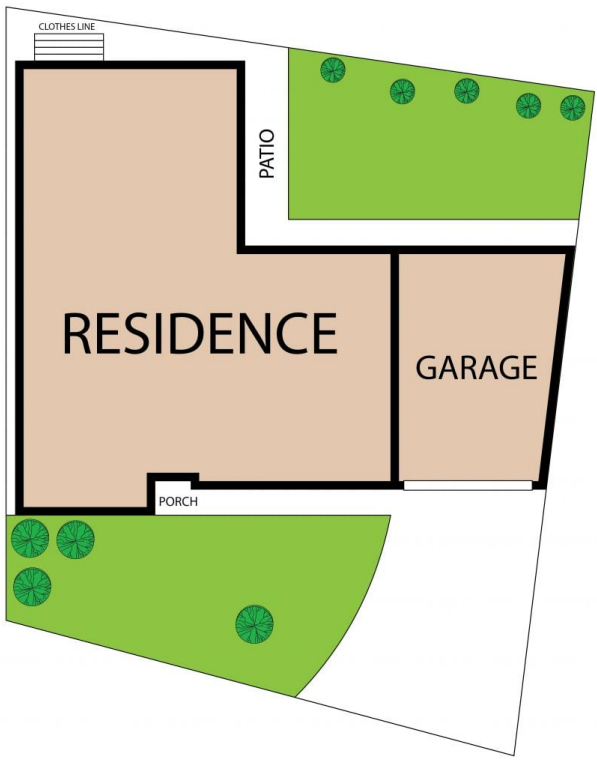
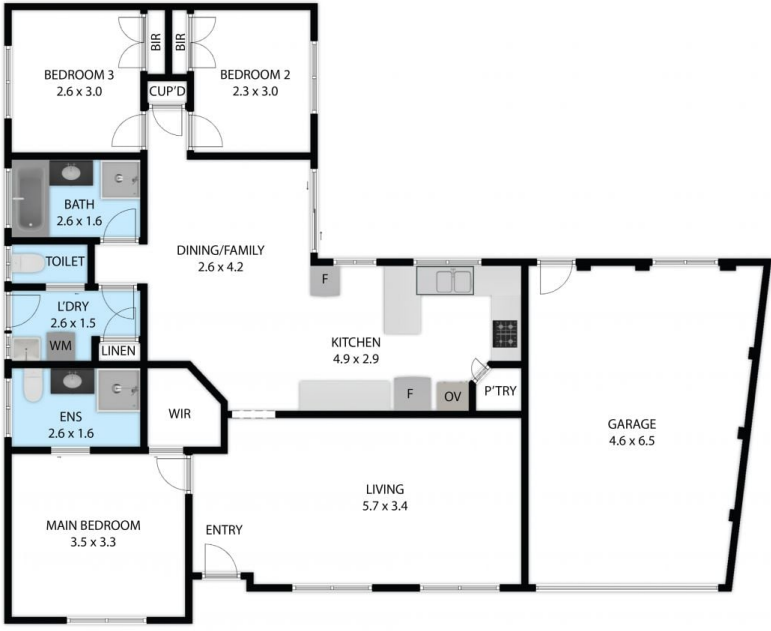
View : <https://www.ypa.com.au/8327174>

Key Features:

- ? Natural sunlight throughout: Sunlight filtering into every room.
- ? 3 Bedrooms: Each bedroom includes built-in robes (BIR), with the master bedroom having a walk-in robe and featuring a full ensuite for added privacy and convenience.
- ? Spacious Living Areas: Enjoy a generously sized lounge room perfect for relaxing evenings and ideal for hosting guests.



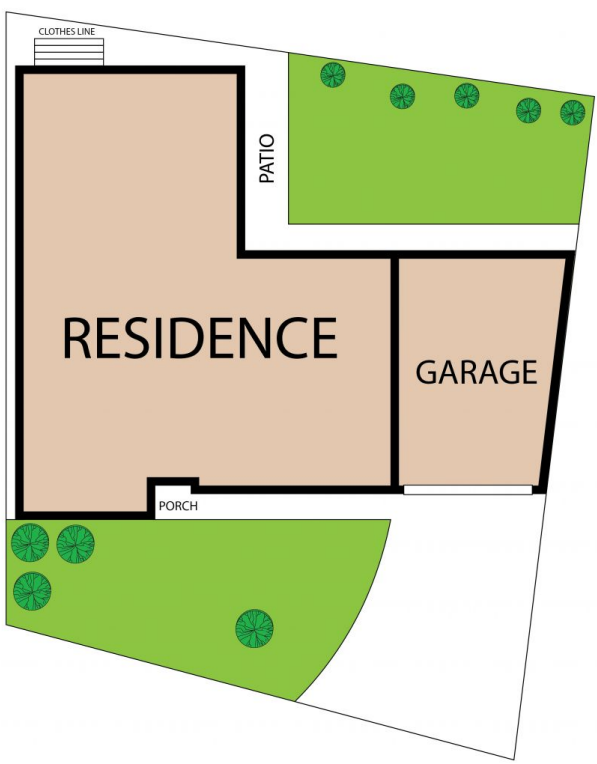
Joe Albioli
0438 133 123



Unit 2/9 Chircop Close, Sydenham, VIC, 3037

TOTAL APPROX. FLOOR AREA 133 SQ.M

Whilst every attempt has been made to ensure the accuracy of the floor plan contained here, measurements of doors, windows, rooms and any other items are approximate and no responsibility is taken for any error, omission, or misstatement. This plan is for illustrative purposes only and should be used as such by any prospective purchaser.



Unit 2/9 Chircop Close, Sydenham, VIC, 3037

TOTAL APPROX. FLOOR AREA 133 SQ.M

Whilst every attempt has been made to ensure the accuracy of the floor plan contained here, measurements of doors, windows, rooms and any other items are approximate and no responsibility is taken for any error, omission, or misstatement. This plan is for illustrative purposes only and should be used as such by any prospective purchaser.

