



2/18 Weir Street Rye VIC

4 2 2

Nestled just 200 meters from the golden sands of the Rye foreshore and moments from the vibrant heart of Rye Village, this newly built townhouse at 2/18 Weir Street represents the pinnacle of modern coastal living.

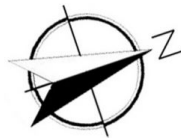
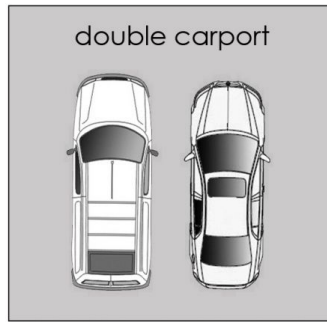
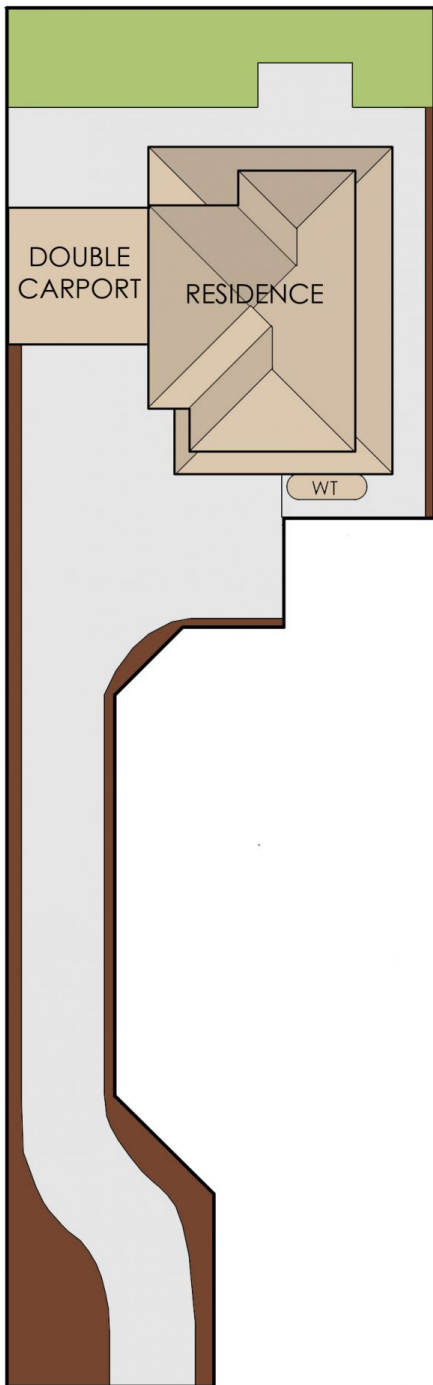
Never before lived in, this pristine home combines sleek design with a prime location, offering the perfect base for enjoying all the Mornington Peninsula has to offer.

Step inside to discover a thoughtfully designed layout that balances style and functionality. The spacious open-plan kitchen, living, and dining area boasts contemporary finishes, with tiled flooring providing a seamless flow and low-maintenance appeal. The modern kitchen impresses with its sleek cabinetry, high-end appliances, and generous bench space, perfect for casual meals or entertaining family and friends.

View : <https://www.ypa.com.au/8322851>



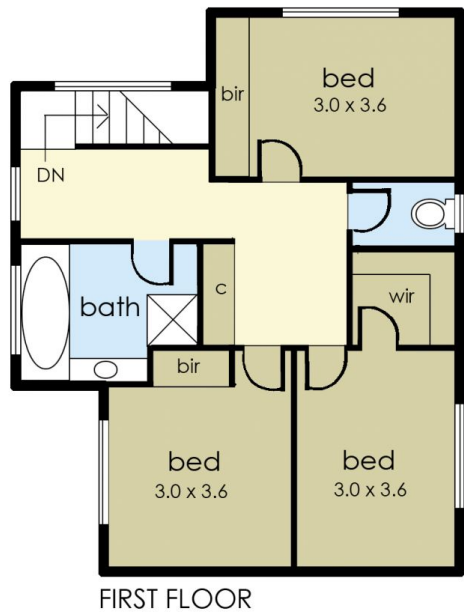
Jessica Trahar
0416 737 904



Internal living area
approx: 16 squares

Carport area
approx: 4 squares

Total area
approx: 20 squares



2/18 Weir Street, Rye

© Produced by DND Floor Plans

This floorplan is for illustration purposes only and no warranty is given to its accuracy. Purchasers are advised to carry out their own investigations.