



## 8 Chaffmill Close Sydenham VIC

4  3  2 

Discover a fantastic opportunity with this spacious 4-bedroom family home, offering a flexible layout that is perfect for a first-time buyer, investor, or renovator looking to make their mark.

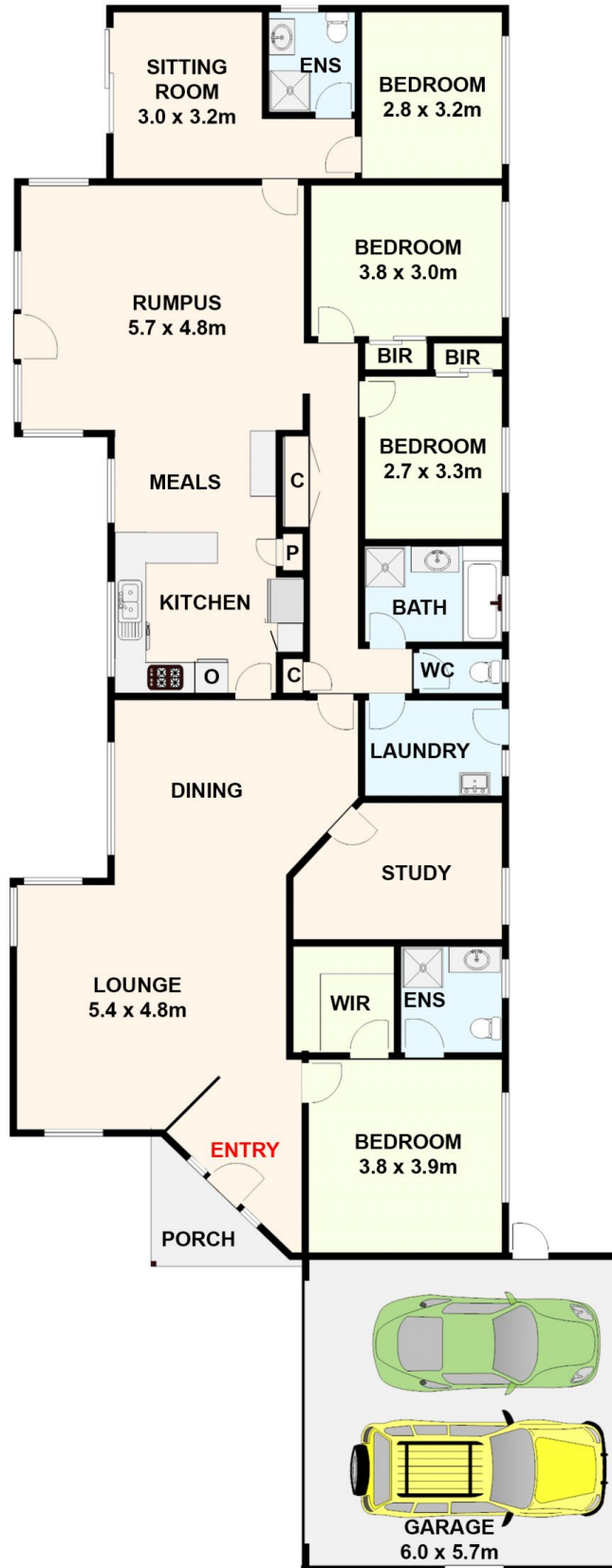
**Price** : \$ 808,000  
**Land Size** : 860 sqm  
**View** : <https://www.ypa.com.au/8313368>

### Key Features:

- 4 generous bedrooms + study - ample space for growing families or home offices
- 3 bathrooms - including an ensuite to the master, ensuring convenience for all family members
- 2 large living areas - perfect for entertaining or relaxing, with plenty of room for family gatherings
- 860m<sup>2</sup> of land - providing an expansive outdoor space, ideal for kids, pets, or potential extensions
- Double car garage - secure parking with additional storage options



**Joe Albioli**  
**0438 133 123**



**8 Chaffmill Close, Sydenham.**

*All data and dimensions shown in this sketch are approximate.*