

**38 Prime Street Mickleham VIC**

4  2  2 

SOLD BY MELISSA ABELA 0405264150

**Price** : \$ 670,000  
**Land Size** : 254 sqm  
**View** : <https://www.ypa.com.au/8310101>

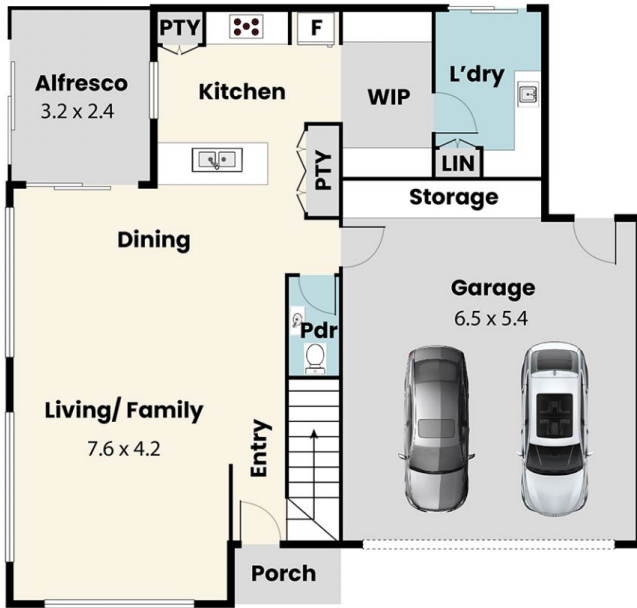


**Melissa Abela**  
0405 264 150

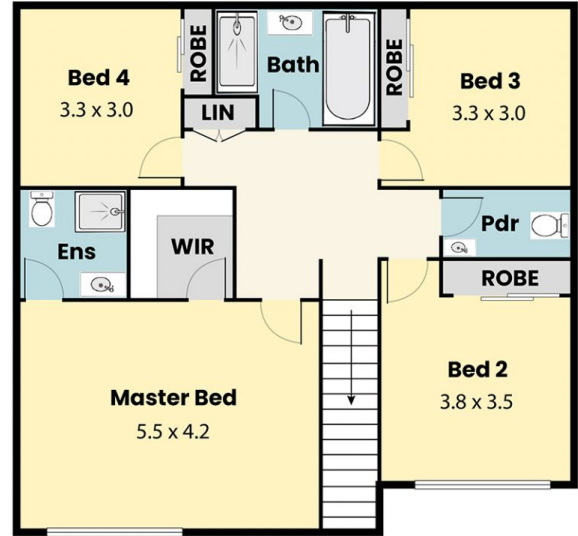


**Gianni D'Angelo**  
0466 185 825

## Ground Floor



## First Floor



38 Prime Street, Mickleham



DISCLAIMER

PLANS SHOWN ARE MARKETING PURPOSE ONLY, ALL DIMENSIONS ARE APPROXIMATE AND NOT TO SCALE, THEY ARE SUBJECT TO ERRORS AND INACCURACIES AND NO LIABILITY WILL BE ACCEPTED. INTERESTED PARTIES SHOULD MAKE THEIR OWN INQUIRIES.

ypa