



## 13 Geraldine Court Kurunjang VIC

4 🏠 2 🚗 4 🚗

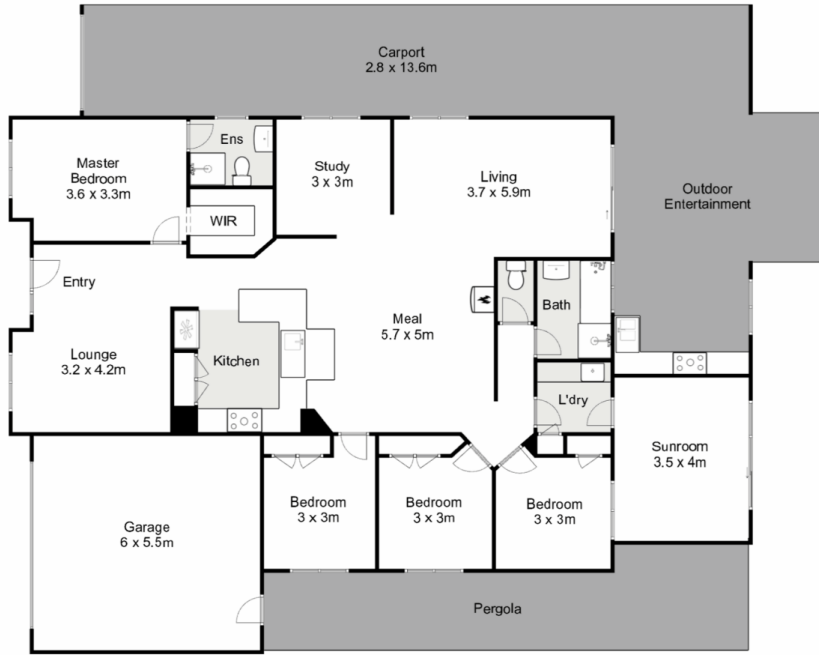
This stunning family home is positioned in the popular suburb of Kurunjang set on a generous 600m<sup>2</sup> (approx.) parcel of land, nearby to local parklands, schools, public transport, and shops. This amazing home is finished to the highest quality & standards inside and outside with amazing outdoor living fit for every entertainer.

Upon arrival, you'll immediately feel at home, greeted by the updated rendered façade, freshly painted concrete, and meticulously designed landscaping. As you step inside this impeccably maintained residence, you'll be welcomed into a formal living area, perfectly suited for both family relaxation and entertaining guests. The generously sized master bedroom, positioned at the front of the home, offers a tranquil retreat, complete with a stylish ensuite featuring a bigger shower and floor to ceiling tiles, as well a spacious walk-in wardrobe.

**Price** : \$ 660,000  
**Land Size** : 600 sqm  
**View** : <https://www.ypa.com.au/8297812>



**Ryan Anders**  
0434 900 300



## 13 Geraldine Court, Kurunjang



Whilst every attempt has been made to ensure the accuracy of the floor plan contained here, measurements of doors, windows, rooms and any other items are approximate and no responsibility is taken for any error, omission, or mis-statement. This plan is for illustrative purposes only and should be used as such by any prospective purchaser. The services, systems and appliances shown have not been tested and no guarantee as to their operability or efficiency can be given.

