



42 Nautilus Street Rye VIC

3  1  1 

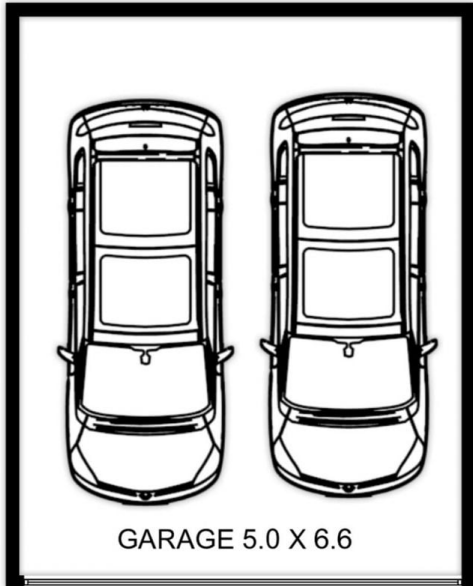
YPA Real Estate is proud to offer this lovely 3 bedroom home comprising-

- A generous floor plan including three bedrooms and one bathroom (updated)
- Electric cooking
- Under cover entertainment area
- Ducted heating
- Reverse cycle split system
- Single garage
- Garden Shed
- Huge block
- Elevated position offering breathtaking treetop and hinterland views
- Located within minutes to both Rye town centre, foreshore, and ocean beach

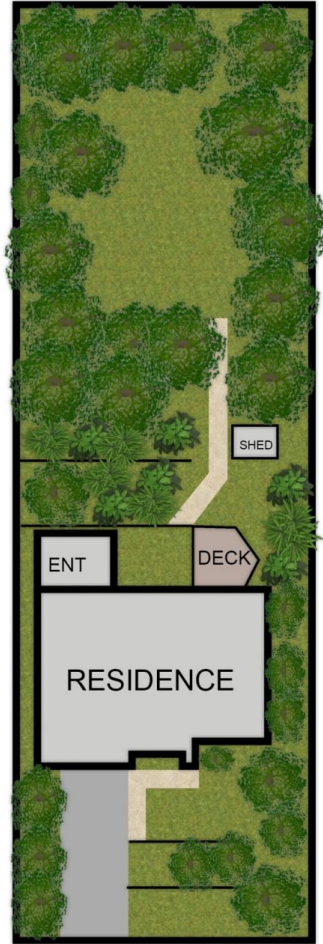
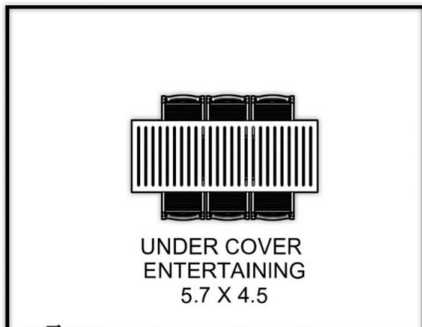
View : <https://www.ypa.com.au/8296416>



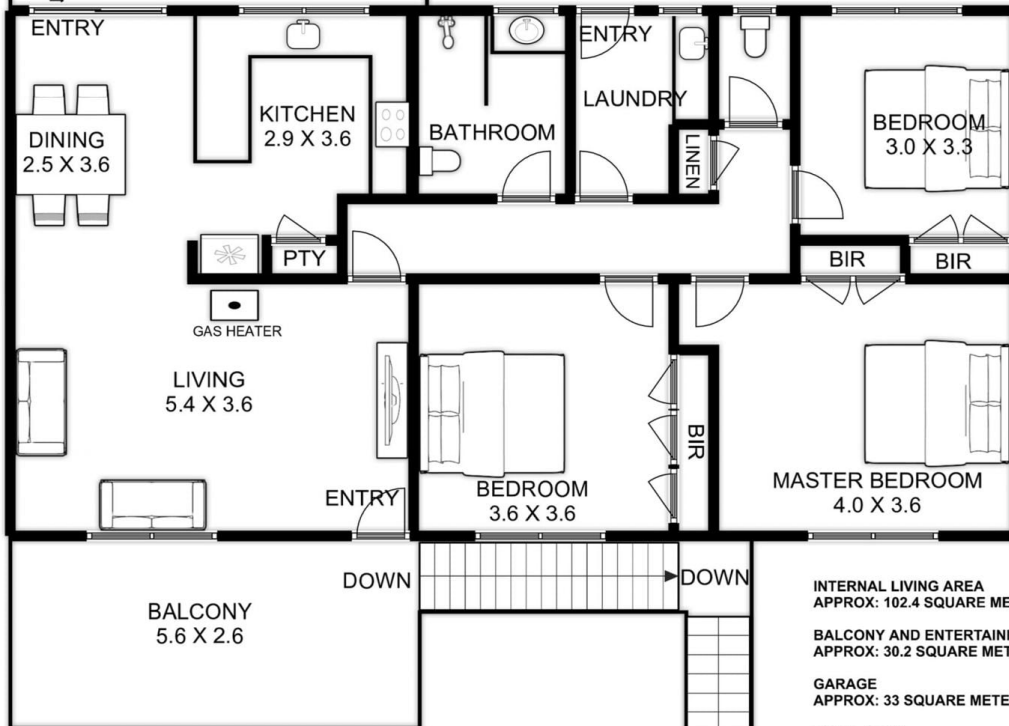
Jessica Trahar
0416 737 904



GARAGE



SITE



RESIDENCE

INTERNAL LIVING AREA
APPROX: 102.4 SQUARE METERS

BALCONY AND ENTERTAINING
APPROX: 30.2 SQUARE METERS

GARAGE
APPROX: 33 SQUARE METERS

TOTAL AREA
APPROX: 165.6 SQUARE METERS

42 NAUTILUS STREET RYE

This is an artistic representation. All measurements, dimensions and illustrated areas are approximate. It is the responsibility of all interested parties to verify all data depicted and omitted.