

14 Higgs Circuit Sunbury VIC

4 2 2

This beautifully designed family home offers a perfect blend of space, comfort, and convenience in a prime location close to the Rosenthal Shopping Precinct, medical centres, quality schools, and with seamless access to the Calder Freeway. With a versatile floorplan and multiple living areas, this home is perfect for growing families, first-home buyers, or investors seeking a well-appointed residence in a highly sought-after area.

Upon entry, you are welcomed by a large front living area, providing a spacious retreat for relaxation or entertaining guests. The heart of the home is the expansive open-plan kitchen, living, and dining area, where natural light flows effortlessly throughout. The kitchen is designed for functionality and style, featuring a gas cooktop, oven, dishwasher, and ample bench and cupboard space, making meal preparation and entertaining a breeze. This

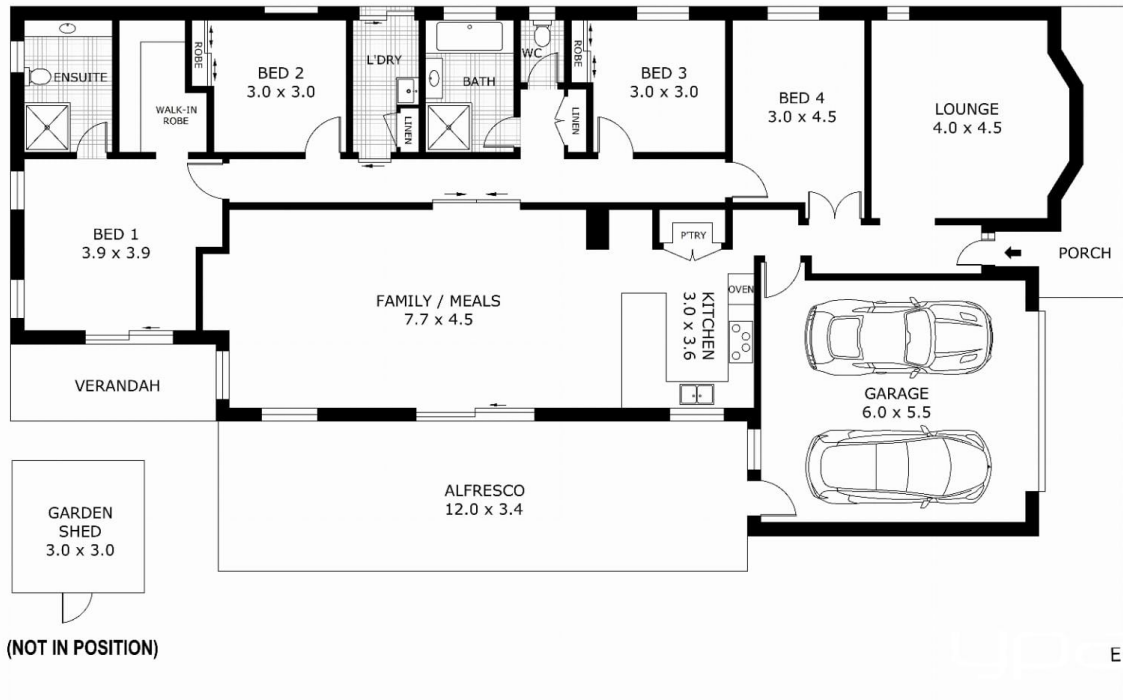
Price : \$ 697,000
Land Size : 684 sqm
View : <https://www.ypa.com.au/8293426>



Cassandra Doria
 0497 972 028



Patrick Kilkeny
 0401 175 248



Disclaimer: All images, views and diagrams are indicative only. Dimensions, areas and landscape are indicative and subject to change without notice. Purchasers should check the plans and specifications included in the terms of the contract of sale carefully prior to signing the contract.