



## 5 Wetherby Place Melton West VIC

3 2 2

Situated on a generous allotment of 611m<sup>2</sup> approx. with a 17.5m wide frontage in a beautiful tree lined street in one of Melton West's most picturesque and sought-after areas, this property is sure to impress all buyers. Being within close proximity to parks, shops, walking tracks, public transport and schools of all levels including Arnold's Creek Primary School, Wedge Park Primary School, St Catherines of Sienna, St Francis College and Melton Secondary College, this property offers not only a perfect family living environment but a wonderful area to enjoy all that the beautiful Westlake community has to offer.

This beautiful family home provides space for a growing family with plenty of space both inside and outside. Stepping into the home you are greeted by the large master bedroom which features big windows allowing ample natural light, feature wall, ceiling fan and is

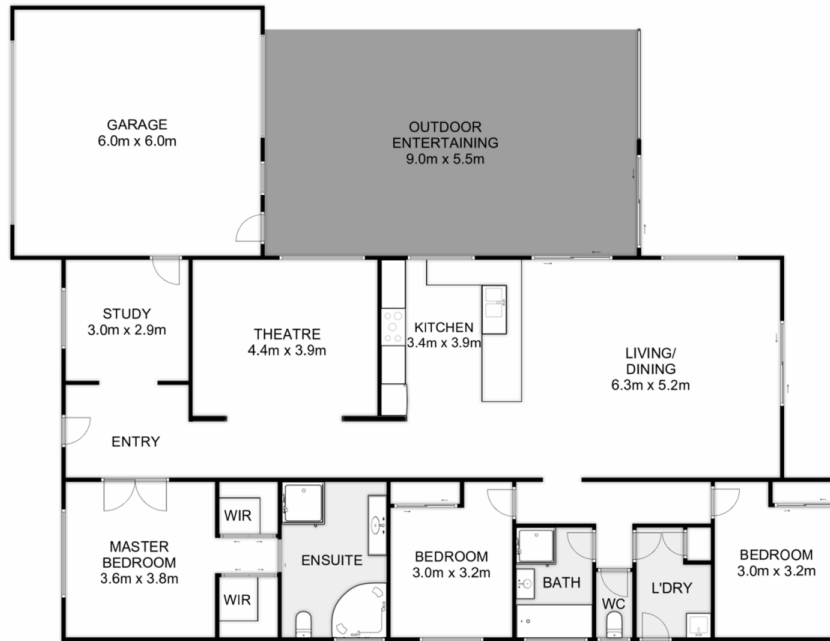
**Price** : \$ 620,000  
**Land Size** : 611 sqm  
**View** : <https://www.ypa.com.au/8287979>



**Shane Spiteri**  
 0488 980 115



**Ricky Frew**  
 0402 007 100



## 5 Wetherby Place, Melton West

Ypa

Whilst every attempt has been made to ensure the accuracy of the floor plan contained here, measurements of doors, windows, rooms and any other items are approximate and no responsibility is taken for any error, omission, or mis-statement. This plan is for illustrative purposes only and should be used as such by any prospective purchaser. The services, systems and appliances shown have not been tested and no guarantee as to their operability or efficiency can be given.

