

37 McLachlan Street Bacchus Marsh VIC

4 2 2

Step into this beautifully presented home, where modern comfort meets effortless style with Total Building a local builder adding to the quality. From the moment you arrive, the landscaped façade sets the tone for what lies within.

The master bedroom is a true retreat, featuring plush carpeting, a large tinted window with blinds for privacy, and a spacious walk-in wardrobe. Flowing seamlessly into the luxurious ensuite, you'll find a generous walk-in shower, a sleek stone bench vanity, and contemporary finishes.

At the heart of the home, the stunning kitchen boasts stone benchtops, a gas cooktop, a 600mm oven, a dishwasher and ample cupboard space. The open-plan design effortlessly connects the kitchen to the spacious living area, where warm laminate flooring, a split-system air conditioner, and an inviting atmosphere make it perfect for

Land Size : 441 sqm

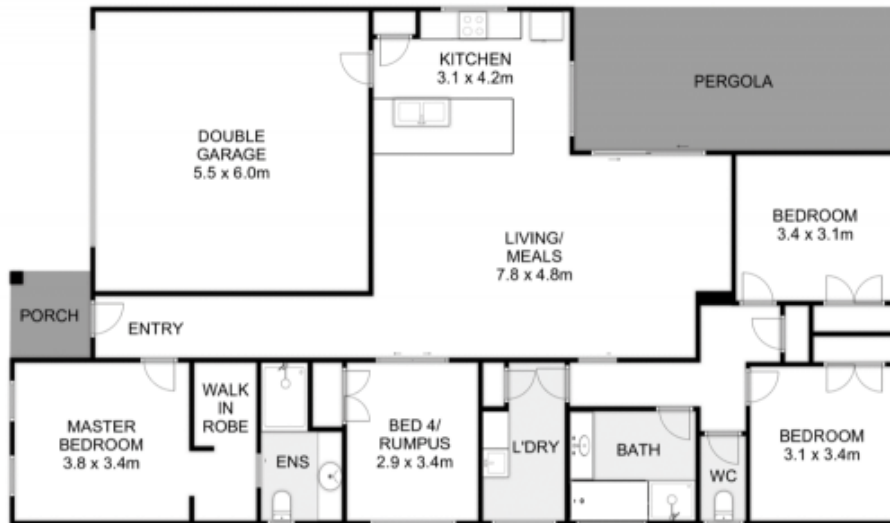
View : <https://www.ypa.com.au/8279031>



Jodi Nash
0419 342 120



Bethany Noyce
0427 604 358



37 Mclachlan Street, Bacchus Marsh



Whilst every attempt has been made to ensure the accuracy of the floor plan contained here, measurements of doors, windows, rooms and any other items are approximate and no responsibility is taken for any error, omission, or mis-statement. This plan is for illustrative purposes only and should be used as such by any prospective purchaser. The services, systems and appliances shown have not been tested and no guarantee as to their operability or efficiency can be given.

