



## 23-25 Nautilus Street Rye VIC

3  1  4 

Discover the rare opportunity to create a truly self-sustainable lifestyle on this extraordinary 1,804m<sup>2</sup> allotment, quietly nestled in one of Rye's most peaceful and prized locations. Perfectly situated between the gentle bay beaches and the raw beauty of the ocean coastline, this charming property offers more than just a home?it offers a way of life rooted in independence, abundance, and nature.

Already home to flourishing fruit trees, thriving grapevines, and an underground cellar - ideal for food preservation or winemaking - the foundations for your self-reliant future are already in place. Whether your dream includes growing your own food, raising chickens, installing solar, or collecting rainwater?this expansive property gives you the space and freedom to live in harmony with the land.

The two-storey home features three spacious bedrooms, a

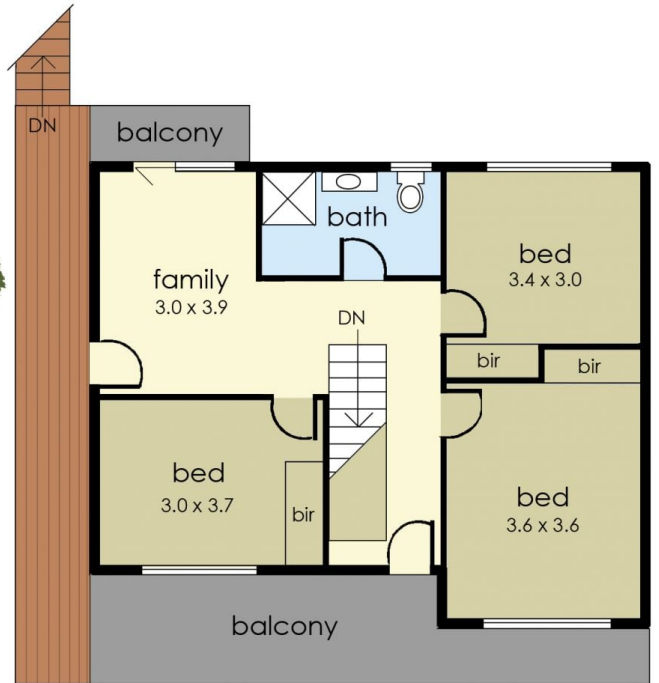
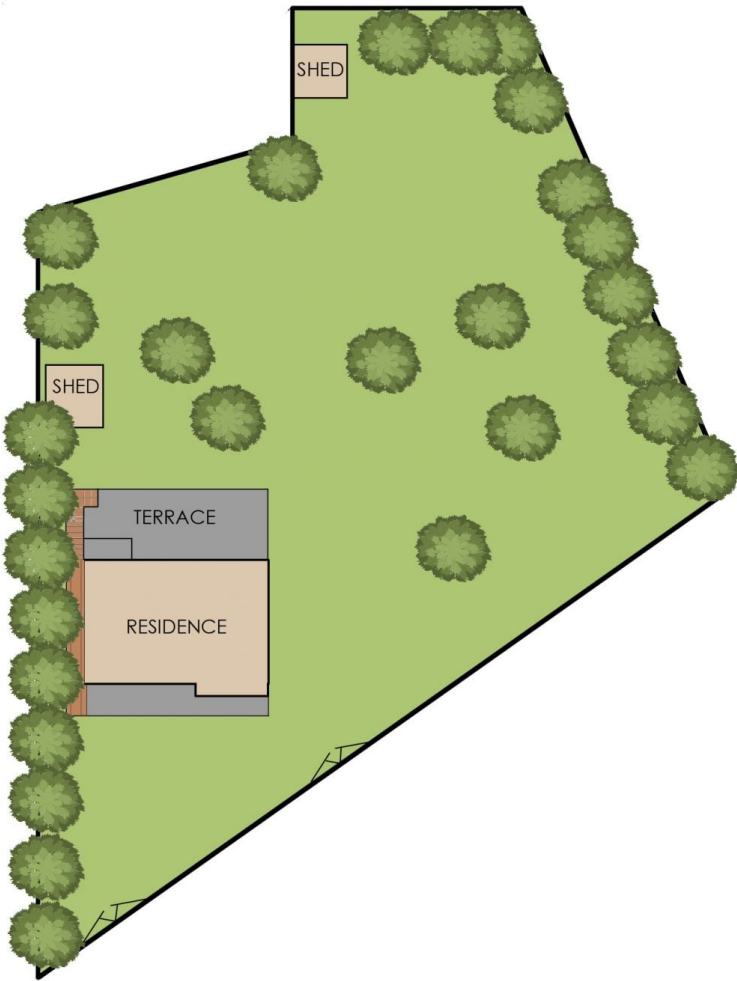
**Price** : \$ 960,000  
**Land Size** : 1804 sqm  
**View** : <https://www.ypa.com.au/8278998>



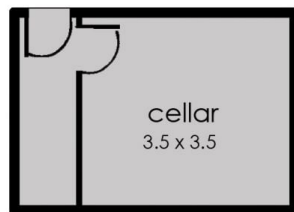
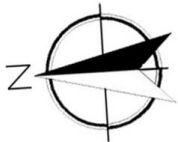
**Tony Talarico**  
0420 778 401



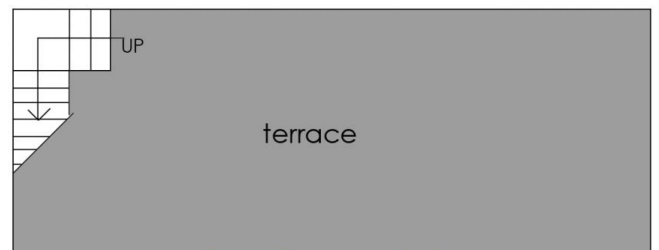
**Katrina Talarico**  
0420 778 404



FIRST FLOOR



LOWER FLOOR



GROUND FLOOR

Internal living area  
approx: 16 squares

Balcony area  
approx: 2 squares

Total area  
approx: 18 squares

## 23-25 Nautilus Street, Rye

© Produced by DND Floor Plans

This floorplan is for illustration purposes only and no warranty is given to its accuracy. Purchasers are advised to carry out their own investigations.