



## 63 Elizabeth Avenue Capel Sound VIC

3 2 2

Just minutes from the beautiful Capel Sound Foreshore and Wetlands, this beautifully maintained, ten-year-old brick veneer home offers a perfect balance of modern comfort and effortless living. Situated on an easy-care 450m<sup>2</sup> block, it is designed for those who appreciate a relaxed lifestyle with minimal maintenance.

Inside, the home boasts three spacious bedrooms, each equipped with built-in robes, providing ample storage. The generously sized primary suite is a true retreat, featuring a walk-in robe and a private ensuite for added comfort and convenience. Thoughtfully designed, this residence offers a seamless flow between its light-filled living spaces, creating a welcoming atmosphere for families, couples, or downsizers alike.

At the heart of the home is the open-plan kitchen, dining,

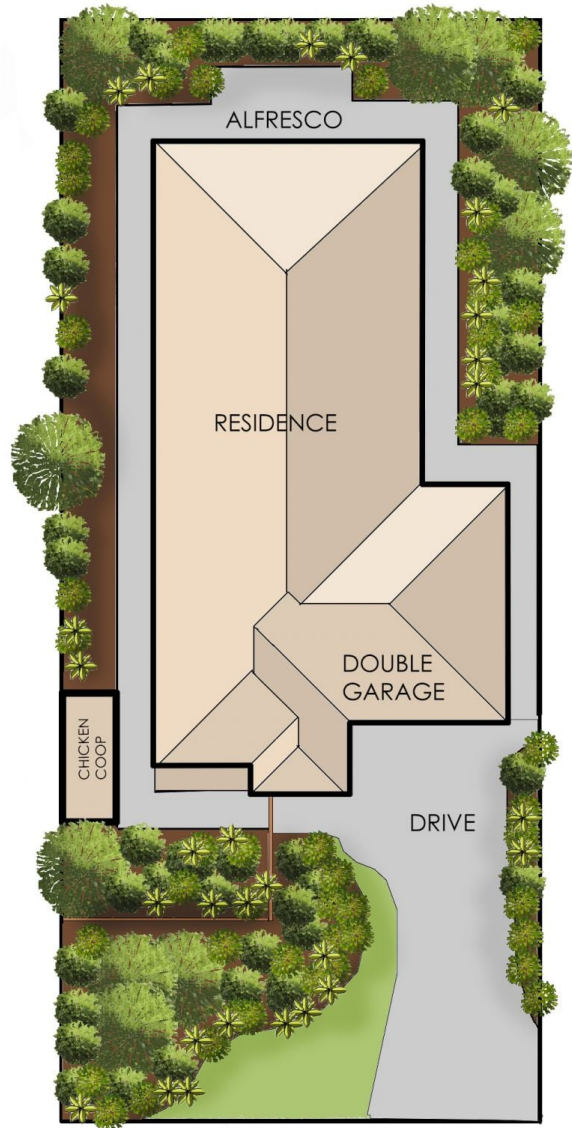
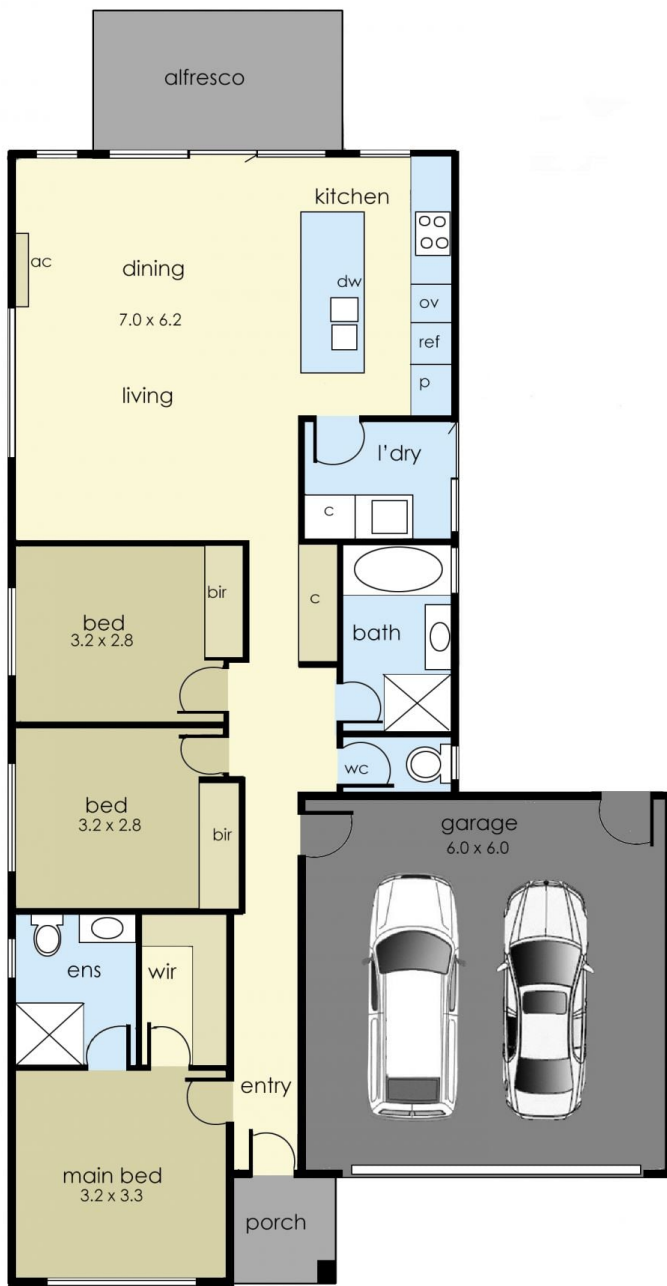
**Price** : \$ 820,000  
**Land Size** : 450 sqm  
**View** : <https://www.ypa.com.au/8275737>



**Jade Springer**  
0437 410 791



**Kelsie Janssen**  
0417245204



Internal living area  
approx: 12 squares

Garage area  
approx: 4 squares

Porch and alfresco  
approx: 1 square

Total area  
approx: 17 squares

## 63 Elizabeth Avenue, Capel Sound

©Produced by DND Floorplans

Floorplan is a "guide only" for marketing purposes, and not a working drawing. Dimensions are indicative only