



14 Rodney Street Rye VIC

4 2 2

Nestled in the heart of the stunning Mornington Peninsula, just moments from the golden shores of Blairgowrie and the rugged beauty of the back beach, 14 Rodney Street, is a sophisticated coastal sanctuary offering space, privacy, and effortless indoor-outdoor living. Set on an expansive 920sqm allotment, this four-bedroom, two-bathroom ranch-style residence is an exceptional retreat for families, holidaymakers, or those seeking a relaxed yet refined seaside lifestyle.

Secured behind high fences and an electric front gate with keypad entry, this residence offers complete privacy from the moment you arrive. Inside, the home is a masterclass in light, space, and contemporary design, with a capacious open plan living and dining area that comfortably accommodates up to 12 guests. Stunning herringbone timber flooring, abundant natural light from skylights, and

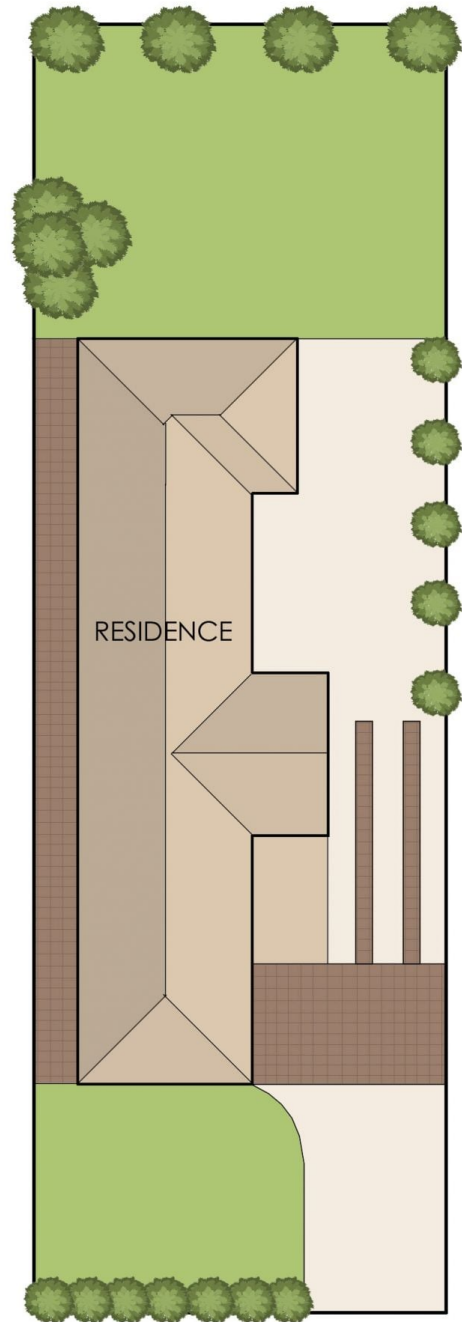
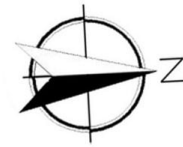
Price : \$ 1,200,000
Land Size : 920 sqm
View : <https://www.ypa.com.au/8275666>



Tony Talarico
0420 778 401



Katrina Talarico
0420 778 404



Internal living area
approx: 21 squares

Carport area
approx: 4 squares

Total area
approx: 25 squares

14 Rodney Street, Rye

© Produced by DND Floor Plans