



## 10 Anelida Street Rye VIC

6 3 4

Tucked away in one of the most highly coveted locations on the Southern Peninsula, this exceptional family residence, completed in 2023, offers an unparalleled living experience. With its seamless fusion of contemporary design, expansive living spaces, and luxurious finishes, this home is the epitome of modern comfort and functionality.

Upon entering, you'll immediately be struck by the home's vast, open-plan design, which effortlessly blends style and practicality. With five spacious bedrooms, each designed to provide maximum comfort, and two beautifully appointed living areas flooded with natural light, the layout is as functional as it is inviting. At the heart of the home is the chef's kitchen, where sleek cabinetry, top-of-the-line appliances, and generous bench space await, making it the perfect space for both cooking and entertaining. The rich warmth of timber flooring and the plush softness of

**Price** : \$ 1,200,000  
**Land Size** : 698 sqm  
**View** : <https://www.ypa.com.au/8266978>



**Jade Springer**  
0437 410 791



**Kelsie Janssen**  
0417245204

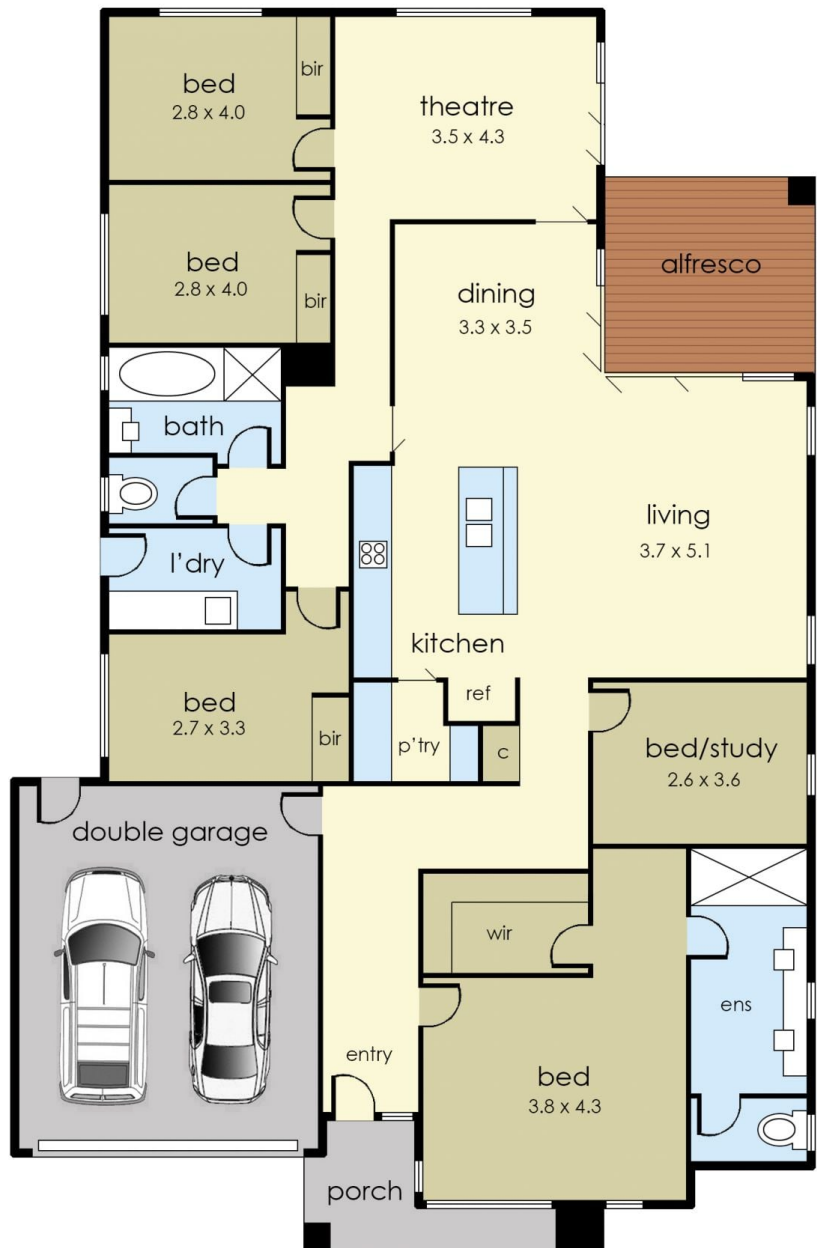
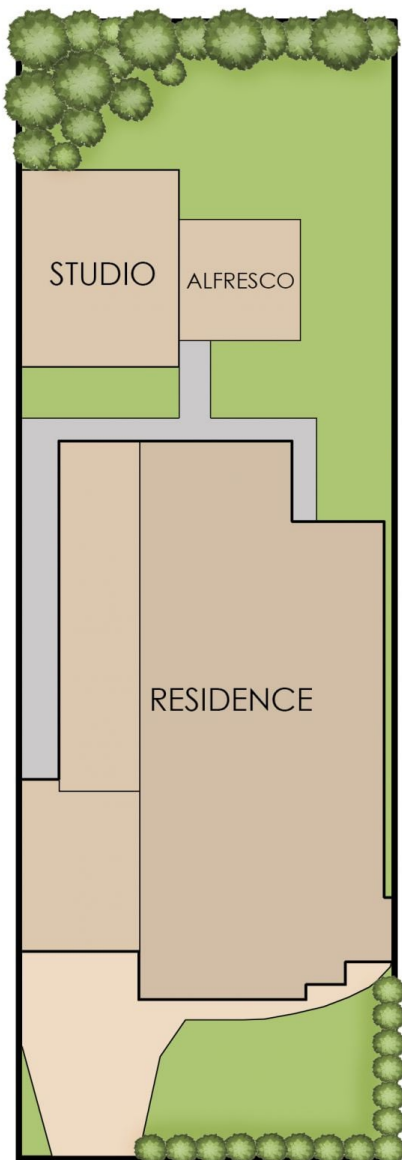
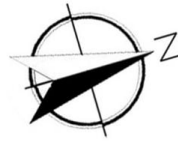


Internal living area  
approx: 22 squares

Garage area  
approx: 4 squares

Alfresco area  
approx: 1.5 squares

Total area  
approx: 27.5 squares



# 10 Anelida Street, Rye

© Produced by DND Floor Plans

This floorplan is for illustration purposes only and no warranty is given to its accuracy. Purchasers are advised to carry out their own investigations.