



## 18 Gunnawarra Road Kurunjang VIC

3 2 3

Situated on a spacious 650m<sup>2</sup> (approx.) block in a peaceful street, this upgraded home is perfectly positioned near all essential amenities. Just minutes from Kurunjang Primary and Secondary Colleges, as well as other excellent schools such as Heathdale Christian College, High Street shopping, bus stops, freeway access, and numerous parks and playgrounds, it's no wonder this pocket of Kurunjang is sought after.

From the moment you arrive, this property makes an impression with its fully landscaped front yard, featuring manicured lawns, feature palm trees and weeping cherry that add to its inviting appeal. With the house displaying bay windows, cream brick window surroundings and a bullnose porch, the house enhances the landscaping further.

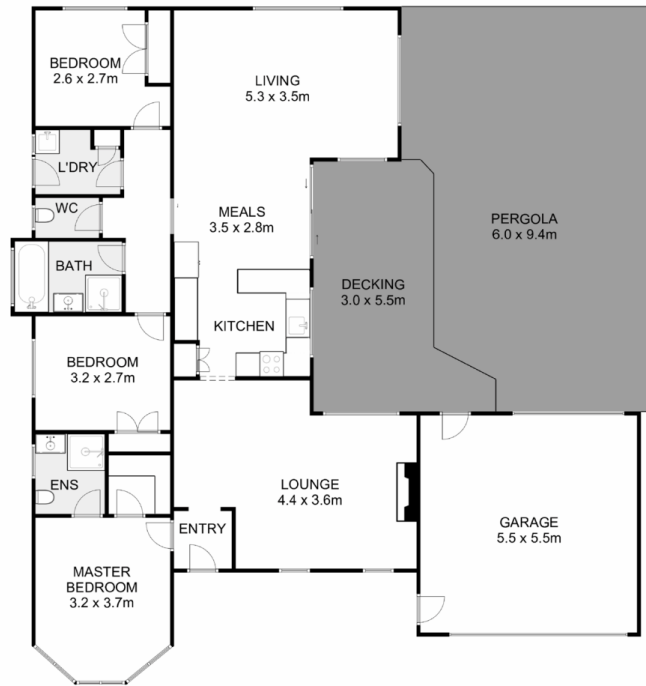
**Price** : \$ 600,000  
**Land Size** : 650 sqm  
**View** : <https://www.ypa.com.au/8259556>



**Shane Spiteri**  
0488 980 115



**Ryan Anders**  
0434 900 300



## 18 Gunnawarra Road, Kurunjang

YPA

Whilst every attempt has been made to ensure the accuracy of the floor plan contained here, measurements of doors, windows, rooms and any other items are approximate and no responsibility is taken for any error, omission, or mis-statement. This plan is for illustrative purposes only and should be used as such by any prospective purchaser. The services, systems and appliances shown have not been tested and no guarantee as to their operability or efficiency can be given.

