



16B Hunsford Avenue Notting Hill VIC

3 1 2

Offering an unmatched combination of modern space and convenience, this amazing townhouse presents an alluring opportunity for individuals seeking a low-maintenance lifestyle. Welcome to 16B Hunsford Avenue, a charming residential property located in the heart of Notting Hill. This delightful home features three spacious bedrooms, perfect for families or those seeking a comfortable living space. This family home offering convenience and functionality for everyday living.

- ? Bright and airy living spaces.
- ? Spacious and well-lit living areas.
- ? Modern kitchen with high-quality appliances.
- ? Three cozy bedrooms with storage.
- ? Private outdoor area, ideal for relaxing or entertaining guests.
- ? Secure internal entry via Garage.

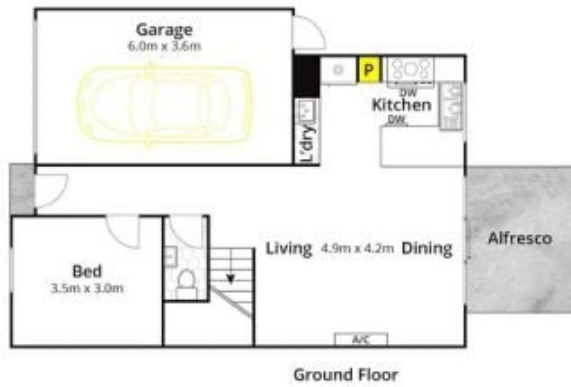
Price : \$ 880,000
Land Size : 178 sqm
View : <https://www.ypa.com.au/8255726>



Rajesh Karnanath
0468 333 572



Frances Cutri
0423 485 688

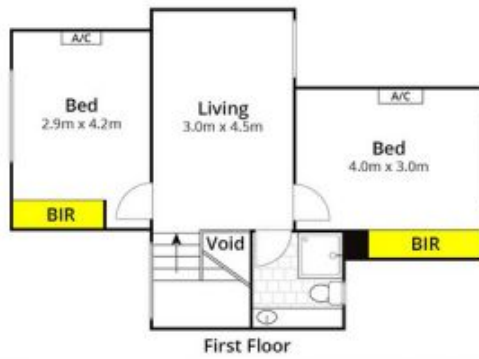


Approx Land Area 177m²

Whilst www.burm.com.au has made every attempt to ensure the accuracy of the floor plan contained here, measurements are approximate and no responsibility is taken for any error, omission, or mis-statement. This plan is for illustrative purposes only.



16B Hunsford Avenue, Notting Hill



Approx Land Area 177m²

Whilst bwr.com.au has made every attempt to ensure the accuracy of the floor plan contained here, measurements are approximate and no responsibility is taken for any error, omission, or mis-statement. This plan is for illustrative purposes only.



16B Hunsford Avenue, Notting Hill