



132 Dundas Street Rye VIC

4 2 1

Situated in the heart of Rye, this beautifully appointed double-storey residence offers an enviable combination of space, style, and supreme convenience. Designed to cater to both growing families and those in search of a premium coastal retreat, this expansive 26-square home is thoughtfully laid out to provide comfort, functionality, and effortless indoor-outdoor living.

Upon entry, the ground floor welcomes you with two distinct yet interconnected living areas, ensuring ample space for both relaxation and entertaining. A dedicated study provides the ideal work-from-home setup or private reading nook, while the well-appointed kitchen is a chef's delight, featuring quality appliances, ample bench space, and stylish tiled flooring that seamlessly extends into the dining area. A powder room and a fully equipped tiled laundry complete the lower level, ensuring everyday practicality.

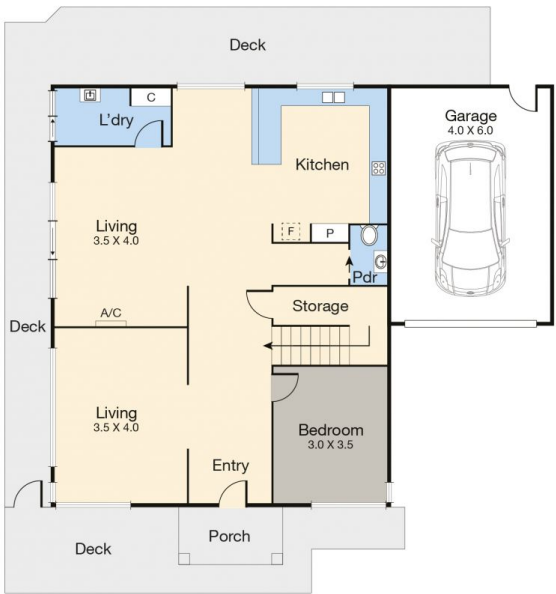
Price : \$ 930,000
Land Size : 597 sqm
View : <https://www.ypa.com.au/8254519>



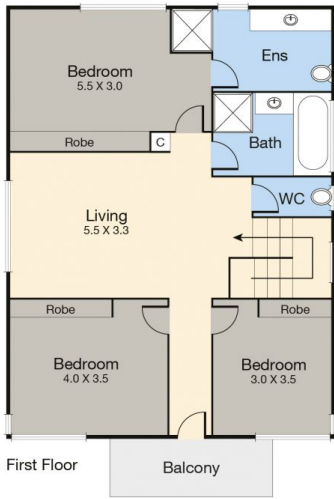
Tony Talarico
0420 778 401



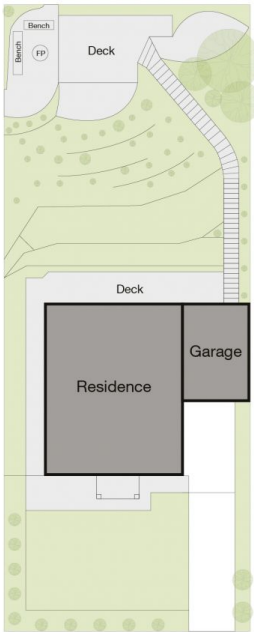
Katrina Talarico
0420 778 404



Ground Floor



First Floor



Site Plan



Floor Plan is for illustration purposes only, and no warranty is given to its' accuracy, so you are advised to carry out your own investigation. Produced by Jonathan Dade Photography