



## 2 Elandra Way CRANBOURNE WEST VIC

3  1  1 

It is the home to live in comprising of 3 bedrooms, one bathroom, and 1 toilet that is set on a corner block in an excellent location. Suitable for couples, singles or small family.

The convenient and functional kitchen is complemented by seamless indoor/outdoor living and dining, the perfect space to unwind & relax after a long day.

A comfortable and spacious backyard is one of the most enjoyable and fun spaces of the home; combines indoor and outdoor living graciously, which serves as an additional entertainment & living area that caters for the year-round enjoyment, entertaining family & friends, children to play and to meet the various lifestyle requirements.

The master bedroom is a gorgeous space that offers a

**Building Size** : 106 Sqrs  
**Land Size** : 460 sqm  
**View** : <https://www.ypa.com.au/8252035>

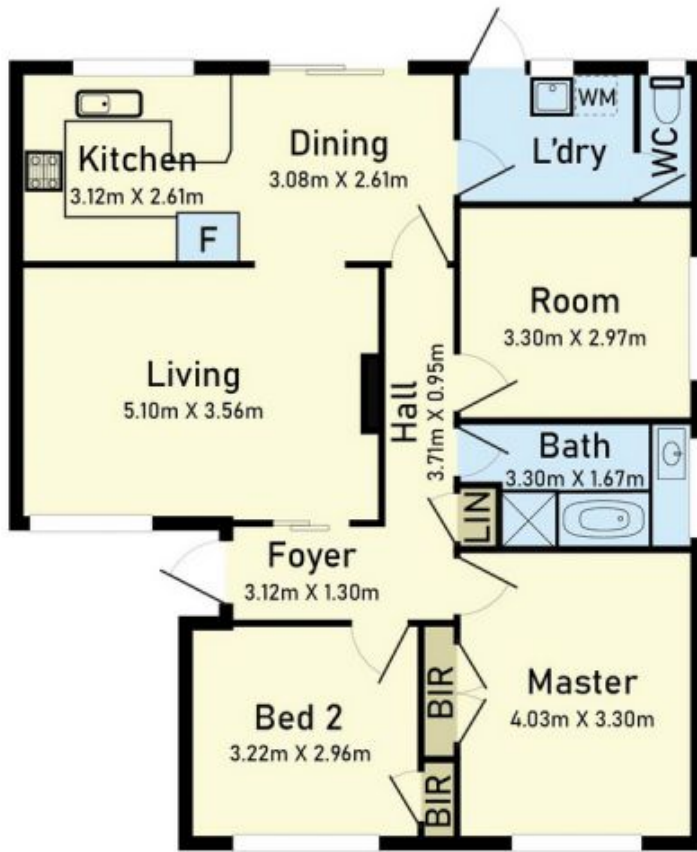


**Jayne Rosevear**  
0438 580 780

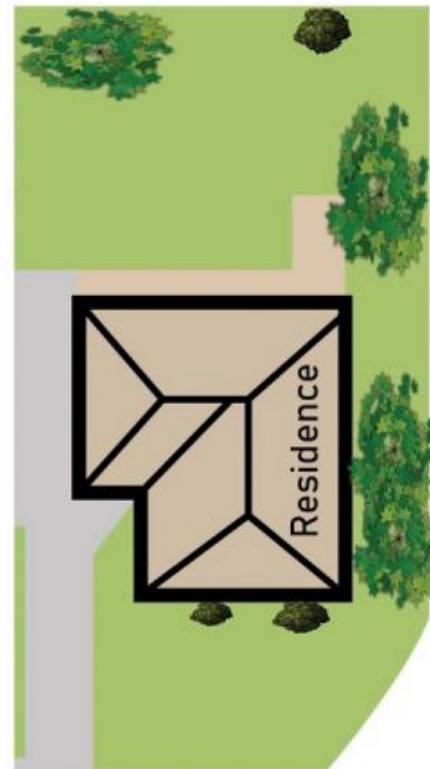


**Hemant Dobriyal**  
0424 938 441

## Floor Plan



## Site Plan



**2 Elandra Way ,Cranbourne West VIC3977**

\* Dimensions are approximate and for illustrative purposes only

