



## 11 Maurie Pears Crescent PIMPAMA QLD

4 2 2

Welcome to 11 Maurie Pears Crescent, Pimpama - the perfect family retreat in an unbeatable location! This spacious home features 4 bedrooms, with a master suite that includes a stylish ensuite and walk-in robes for your ultimate comfort.

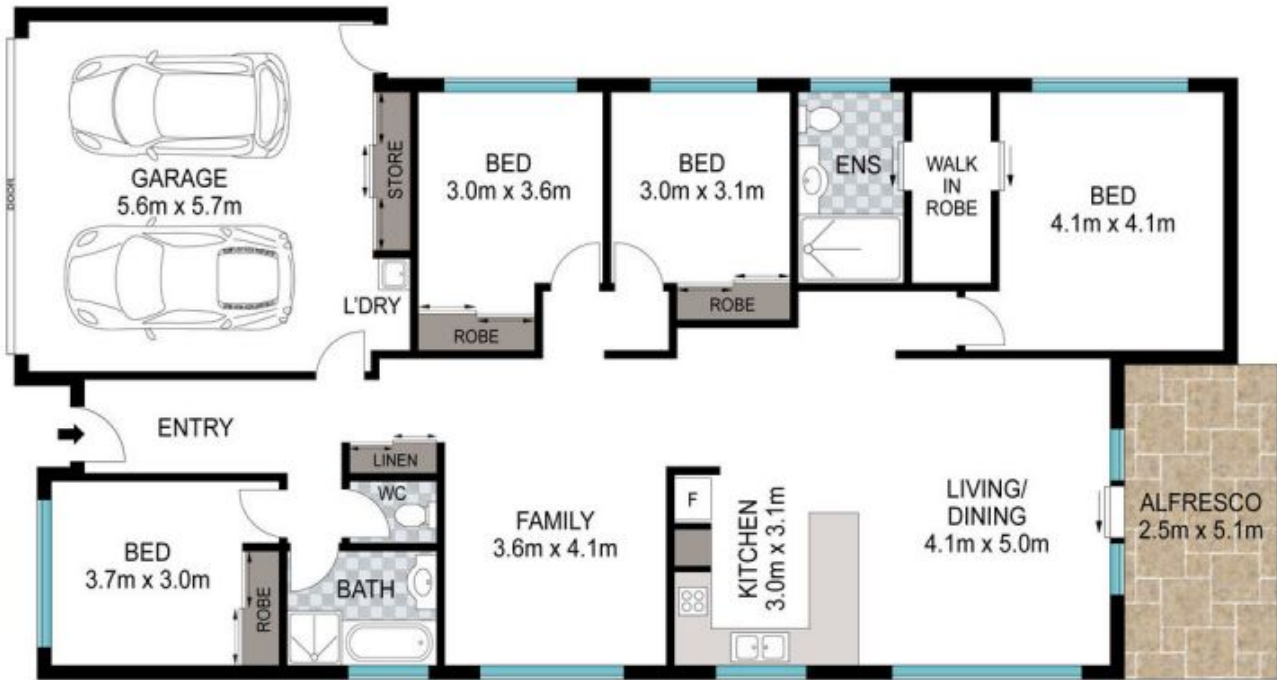
The other bedrooms come complete with convenient built-in robes and are serviced by a central bathroom. Step inside, and you'll discover two separate living areas, providing plenty of room for your family's needs. The open plan living and dining area is perfect for gatherings and everyday relaxation, while the separate lounge room offers versatility and a peaceful escape when desired. Location-wise, it doesn't get much better!

You'll discover Pimpama State Primary & Secondary Colleges a mere stone's throw away, accessible with just a

**Land Size** : 409 sqm  
**View** : <https://www.ypa.com.au/8248813>



**Steven Spiteri**  
0423 428 079



INT: 177 m<sup>2</sup>  
EXT: 13 m<sup>2</sup>



Scale in metres. Indicative only. Dimensions are approximate. All information contained herein is gathered from sources we believe to be reliable. However, we cannot guarantee its accuracy and interested persons should rely on their own enquiries.

11 Maurie Pears Crescent, Pimpama