



119 Brights Drive Rye VIC

2 1 2

Nestled in the heart of Rye, 119 Brights Drive offers an exciting opportunity to secure a charming original beach house with endless potential. Boasting a classic weatherboard façade and featuring beautiful original timber floors, this two-bedroom home sits on a generous 836m² (approx.) allotment, presenting a rare canvas for renovation, redevelopment, or reinvention (STCA).

The home's location is nothing short of exceptional. Situated in a quiet, established neighbourhood, it offers the quintessential coastal lifestyle that the Southern Peninsula is renowned for. Just moments away, you'll find Rye's pristine beaches, vibrant foreshore, and a lively village brimming with boutique shops, cafes, and restaurants. Outdoor enthusiasts will appreciate the proximity to world-class golf courses, the Peninsula Hot Springs, Alba Thermal Springs, and countless coastal walking trails. Surf

Price : \$ 610,000
Land Size : 836 sqm
View : <https://www.ypa.com.au/8241499>



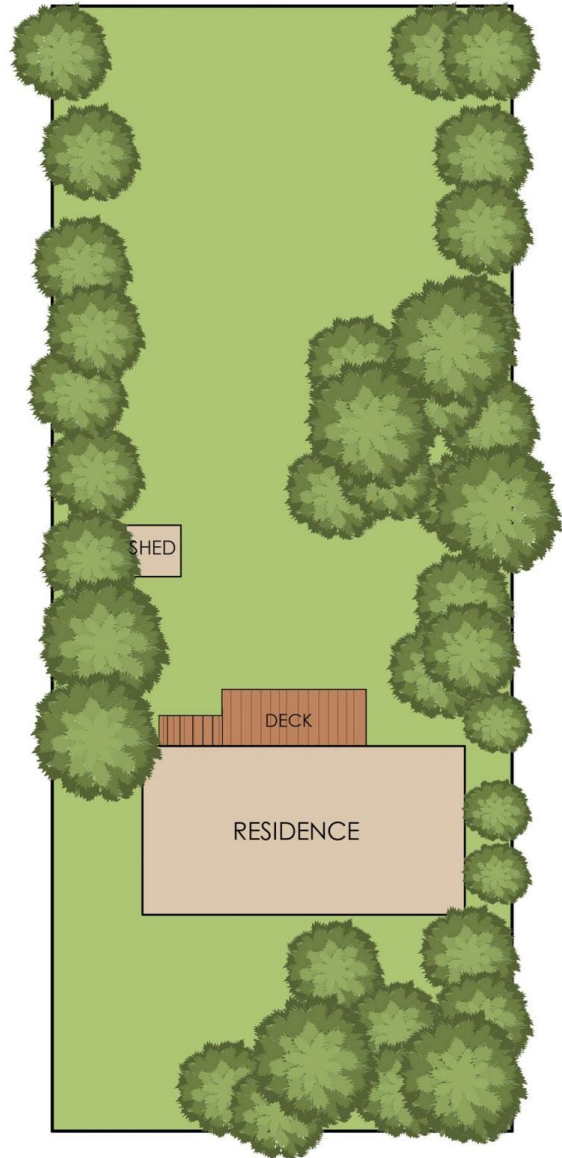
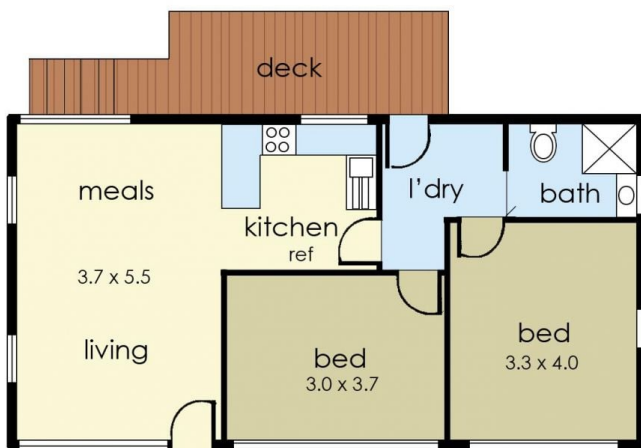
Jade Springer
0437 410 791



Kelsie Janssen
0417245204



Internal living area
approx: 7 squares



119 Brights Drive, Rye

© Produced by DND Floor Plans

This floorplan is for illustration purposes only and no warranty is given to its accuracy. Purchasers are advised to carry out their own investigations.