

## 1 Milton Place STRATHTULLOH VIC

4 2 2

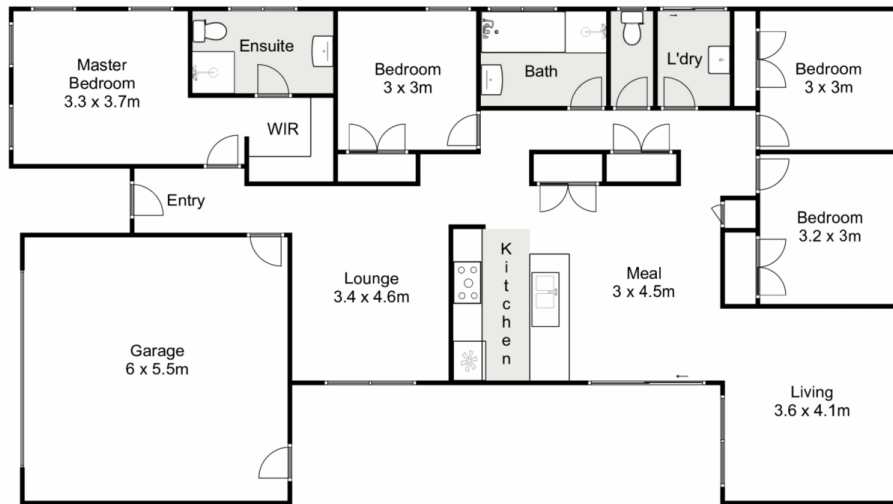
Introducing an exciting piece of modern-day real estate. A rare opportunity to secure a beautiful home perfectly positioned in the Atherstone Estate, Strathtulloh, within walking distance to the upcoming secondary school and the future Melton Hospital. Within close proximity to Strathtulloh Primary School, shopping facilities, Cobblebank Train Station, and so much more. This beautifully presented home is ready to welcome one lucky buyer. Whether you're looking for your first home, a family upgrade, or a smart investment, this property ticks all the boxes!

Upon entry you are greeted with the master bedroom, featuring a walk-in robe and a great sized ensuite bathed in natural light. The remaining three bedrooms located at the rear of the property each feature built in robes and are further accompanied by the modern central bathroom.

**Price** : \$ 615,000  
**Land Size** : 377 sqm  
**View** : <https://www.ypa.com.au/8239262>



**Tahlia Hall**  
**0422 419 589**



## 1 Milton Place, Strathtulloh

Ypa

Whilst every attempt has been made to ensure the accuracy of the floor plan contained here, measurements of doors, windows, rooms and any other items are approximate and no responsibility is taken for any error, omission, or mis-statement. This plan is for illustrative purposes only and should be used as such by any prospective purchaser. The services, systems and appliances shown have not been tested and no guarantee as to their operability or efficiency can be given.

