



35 Shaw Street Dromana VIC

3 3 3

Positioned a mere 550*^m from the pristine shores of Port Phillip Bay, and just a short walk to the town centre and Pier - 35 Shaw Street embodies the true essence of coastal living.

Thoughtfully designed to take advantage of every inch of the low maintenance block and to capture the warm afternoon sun, this beautiful three bedroom, three bathroom home has been meticulously maintained and offers the perfect balance of contemporary sophistication and relaxed seaside charm.

The open-plan layout encourages a natural flow between spaces, while premium appliances, dual ducted heating and cooling, and a back-to-base alarm system provide comfort and peace of mind year-round. Further luxury features include American Oak hardwood timber flooring

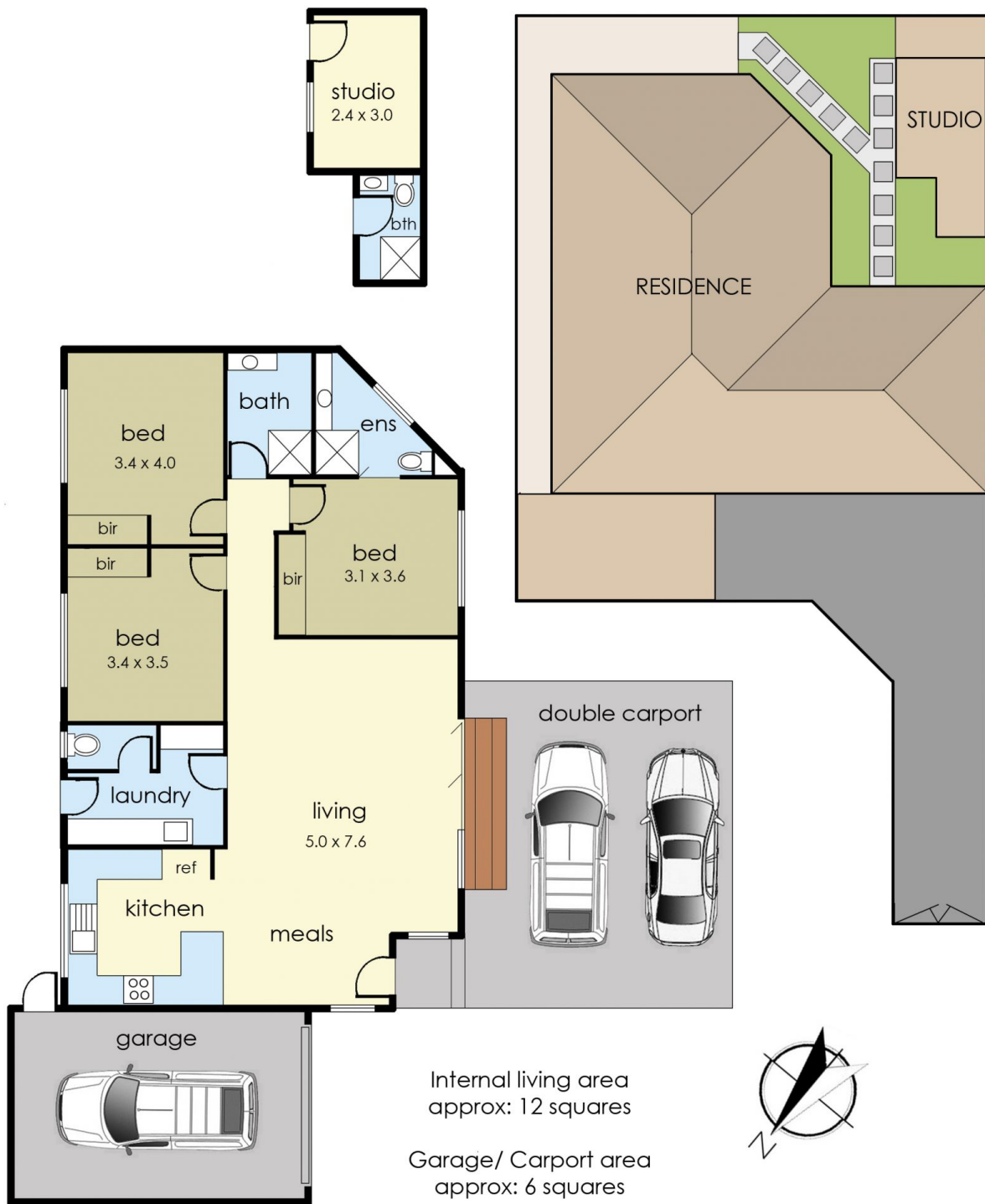
View : <https://www.ypa.com.au/8235238>



Tony Talarico
0420 778 401



Katrina Talarico
0420 778 404



35 Shaw Street, Dromana

© Produced by DND Floor Plans

This floorplan is for illustration purposes only and no warranty is given to its accuracy. Purchasers are advised to carry out their own investigations.