



## 36 Hope Street Rosebud VIC

4 3 2

INSPECT AS ADVERTISED - NO NEED TO REGISTER

YPA Dromana are proud to present this 4 bedroom near new townhouse.

- Leisurely five-minute stroll away to Rosebud Plaza and all essential amenities right around the corner including the beach

- Master bedroom sanctuary, either upstairs or downstairs, each boasting an impressive ensuite. The two additional bedrooms are serviced by a third full bathroom, providing ample space.

- Open-plan kitchen is equipped with state-of-the-art appliances, including a double oven and butlers pantry.

**Land Size** : 416 sqm

**View** : <https://www.ypa.com.au/8234042>



**Nancy Crupi**  
0413 969 284

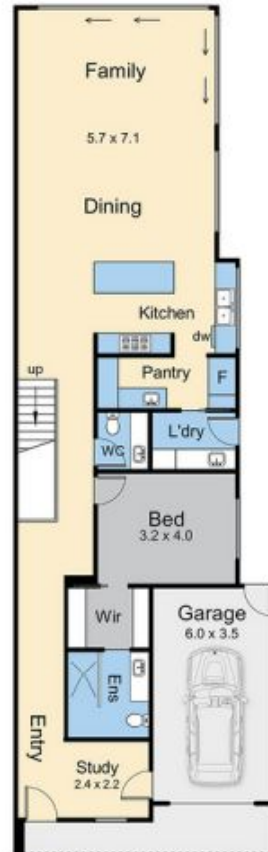


**Nic Apostolidis**  
0406 796 580

Living area = 24.4 squares (approx)  
Garage area = 2.7 squares (approx)  
Total area = 27.1 squares (approx)



Upper Floor



Lower Floor

---

### 36A Hope Street, Rosebud

This floorplan is for illustration purposes only and no warranty is given to its accuracy. Purchasers are advised to carry out their own investigations. Produced by realtywriters (03) 5970 2222