



18 Pearl Court Tootgarook VIC

3 2 2

Nestled amid serene verandahs and an elevated alfresco deck, this character-filled coastal retreat invites you to unwind and embrace Peninsula living. Positioned on a generous 633 sqm (approx.) parcel in a tranquil court setting, this three-bedroom home is brimming with charm and individuality. Warm timber accents adorn the ceilings, floors, complemented by vibrant colour schemes that infuse each room with unique character.

The upper level features an open-plan lounge with doors that spill onto the verandahs, offering the perfect spot for morning coffees or evening drinks as the sun sets. A spiral staircase descends to a spacious second living room, which can also be utilised as a home office. This versatile space connects seamlessly to a large double garage and workshop, with automatic roller doors. This secure parking is discretely positioned at the back of the home, via a rear

Price : \$ 700,000
Land Size : 631 sqm
View : <https://www.ypa.com.au/8232589>



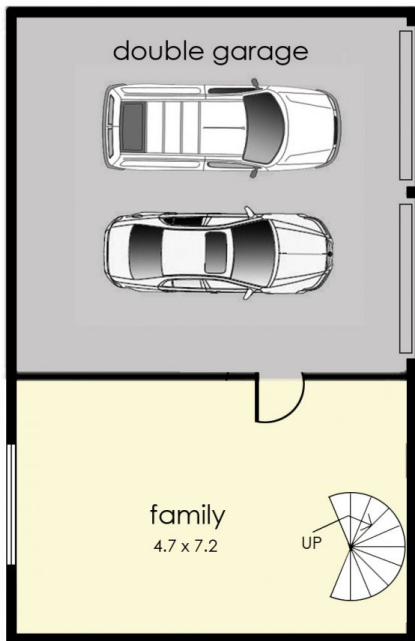
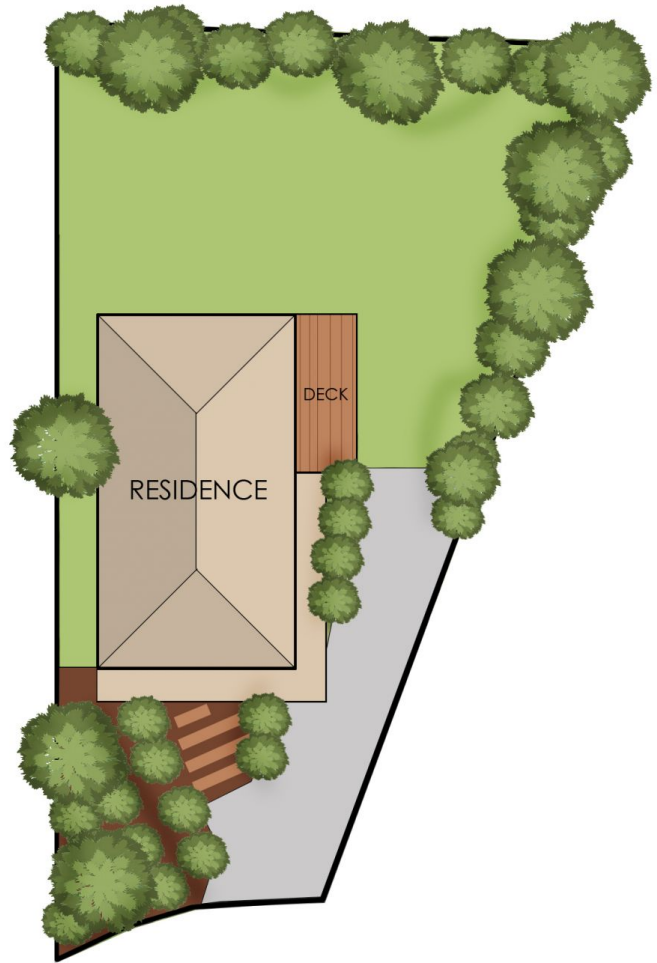
Chris Fahl
0404 668 818



William Hoy
0422 775 580



ENTRY LEVEL



LOWER LEVEL



18 Pearl Court, Tootgarook

© Produced by DND Floor Plans

This floorplan is for illustration purposes only and no warranty is given to its accuracy. Purchasers are advised to carry out their own investigations.