



4 Manfred Court Sunbury VIC

3  1  2 

Ideally located in a quiet court in the much sought after Kismet Park estate is this great opportunity for those wanting to get in to the market.

With polished timber floor boards throughout the home offers a good size lounge room with an air conditioning unit and wall furnace; a light filled kitchen, dining area; three bedrooms, central bathroom, laundry while outside we have a steel garage, garden shed and plenty of space the kids or fur-babies to run around or entertaining on a lot of approx. 650m².

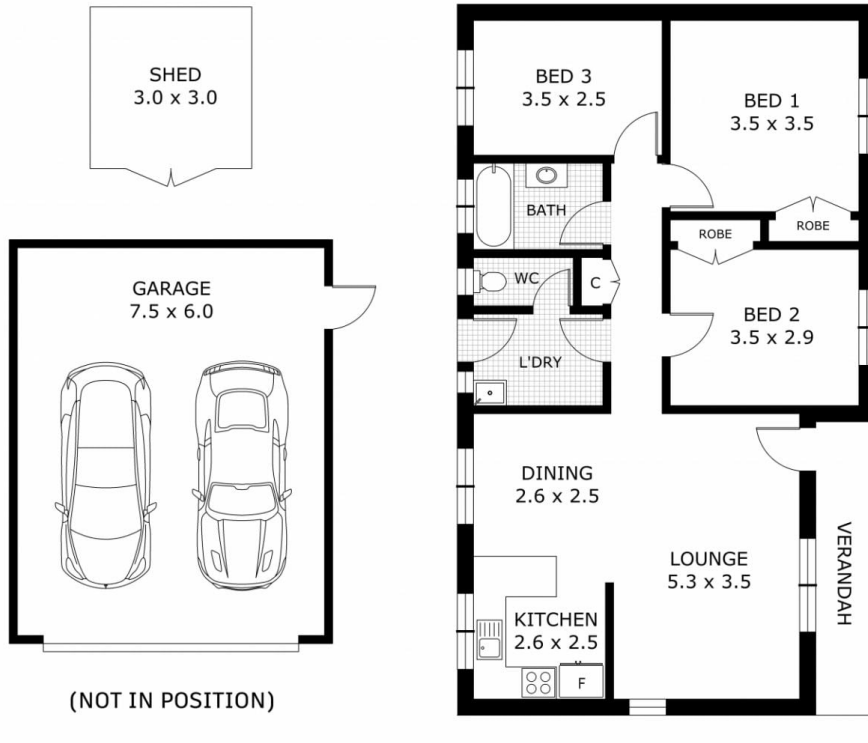
Just minutes away from Spavin Lake, walking tracks, schools, public transport and within easy reach of all that Sunbury has to offer, make sure you put this on your list of inspections.

Price : \$ 550,000
Land Size : 650 sqm
View : <https://www.ypa.com.au/8229489>



Nic Owen
0422 107 177

4 Manfred Court, Sunbury



Disclaimer: All images, views and diagrams are indicative only. Dimensions, areas and landscape are indicative and subject to change without notice. Purchasers should check the plans and specifications included in the terms of the contract of sale carefully prior to signing the contract.