



2/20 Cootamundra Court Werribee VIC

3 2 1

This stunning 3-bedroom, 2-bathroom home offers the perfect blend of style, comfort, and low-maintenance living. Nestled in a quiet court amongst house-proud neighbours, it's located in Werribee's sought-after south side pocket.

The master bedroom features a walk-in robe and private ensuite, while the additional bedrooms are fitted for convenience. A generously sized lounge with beautiful timber floating floors provides the perfect space for relaxing or entertaining. The modern kitchen is equipped with stainless steel appliances, a dishwasher, and overlooks a tiled family meals area.

Stay comfortable all year round with ducted heating and split-system cooling. The low-maintenance gardens include a pergola for outdoor entertaining and artificial lawns for easy upkeep.

Price : \$ 575,000
Building Size : 129 sqm
Land Size : 290 sqm
View : <https://www.ypa.com.au/8225979>

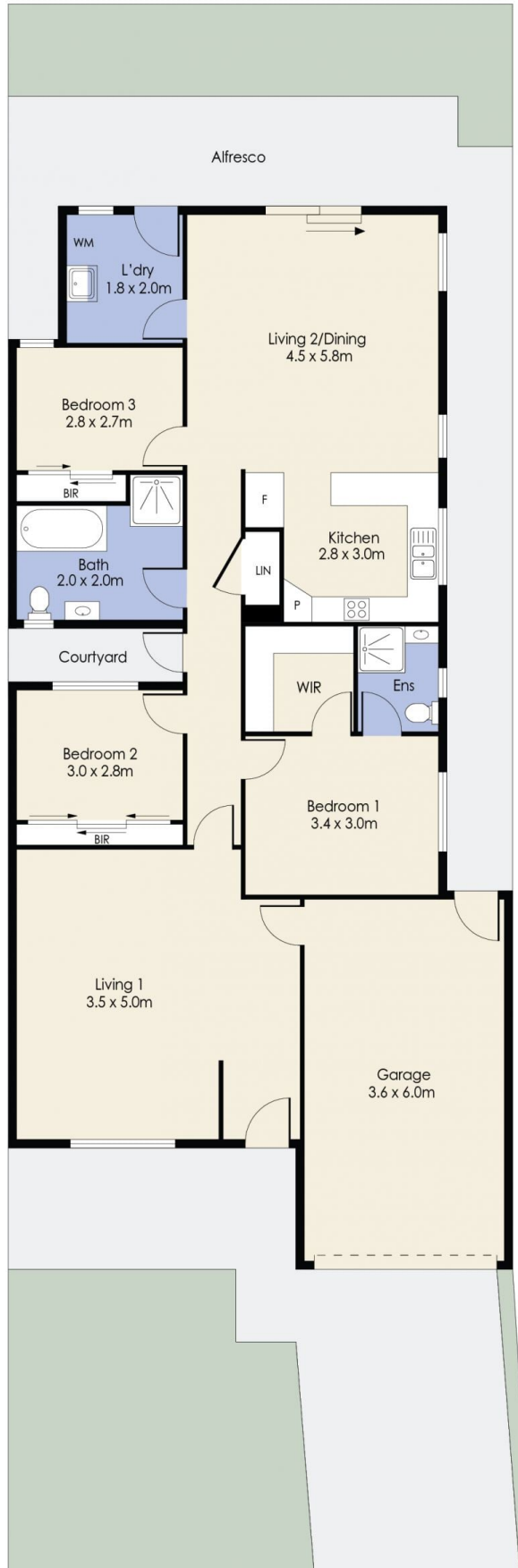


James Antonio
0401 889 248



Kiarah Bagnato
0449 941 895

2/20 Cootamundra Court, WERRIBEE



Whilst every attempt has been made to ensure the accuracy of the floor plan contained here, measurements of doors, windows, rooms and any other items are approximate and no responsibility is taken for any error, omission, or mis-statement. This plan is for illustrative purposes only and should be used as such by any prospective purchaser. The services, systems and appliances shown have not been tested and no guarantee as to their operability or efficiency can be given.