



1/1 Bowman Street Werribee VIC

2 1 2

Situated in the highly sought-after south side of Werribee - Surrounded by fantastic amenities & within proximity to Werribee CBD shopping precinct, multiple primary/secondary schools, alongside having nearby freeway access.

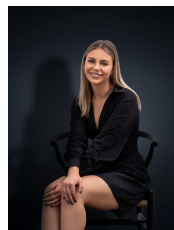
Price : \$ 406,000

View : <https://www.ypa.com.au/8218530>

Property features/upgrades include:

- ? Two generous bedrooms, fitted with large built-in robes and ceiling fans.
- ? Spacious bathroom with toilet
- ? Stainless-steel electric kitchen appliances, including dishwasher.
- ? Enclosed laundry, private courtyard with front access

Additional: Split systems with remotes in the lounge room and both bedrooms, freshly painted internally and the façade, timber floorboards and tiles throughout, open plan



Kiarah Bagnato
0449 941 895



James Antonio
0401 889 248

1/1 Bowman Street, WERRIBEE



Whilst every attempt has been made to ensure the accuracy of the floor plan contained here, measurements of doors, windows, rooms and any other items are approximate and no responsibility is taken for any error, omission, or mis-tatement. This plan is for illustrative purposes only and should be used as such by any prospective purchaser. The services, systems and appliances shown have not been tested and no guarantee as to their operability or efficiency can be given.