

15 Landscape Place Sunbury VIC

4 2 1

Nestled within the scenery of the Canterbury Hills Estate, this home offers everything a buyer could want entering the Sunbury Market. Calling all first home buyers, downsizers or even the savvy investor. This functional family home will surprise you by its spaciousness when you step inside.

The ground floor offers you two living areas, an open plan kitchen, dining and living space. The spacious kitchen offers ample bench and cupboard space, 900mm gas cooktop and oven and dishwasher. Another living space ideal for the kids and family to gather. At the front of the home is a bedroom or can be used as a home office.

Upstairs is three bedrooms, the master bedroom has built in robes, an ensuite with a double vanity and a balcony. Two additional bedrooms with two way access into the main bathroom and one with a walk in robe.

Price : \$ 665,000

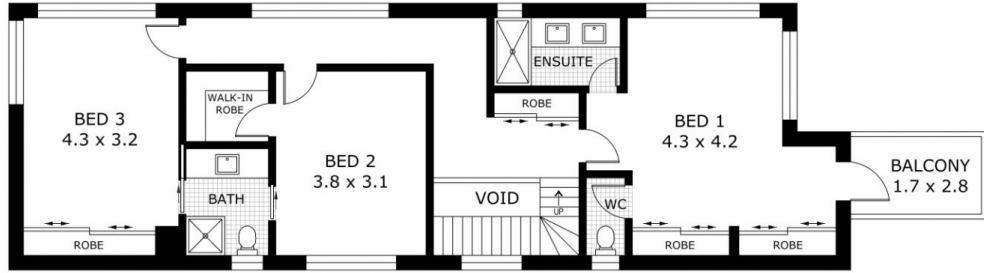
View : <https://www.ypa.com.au/8212699>



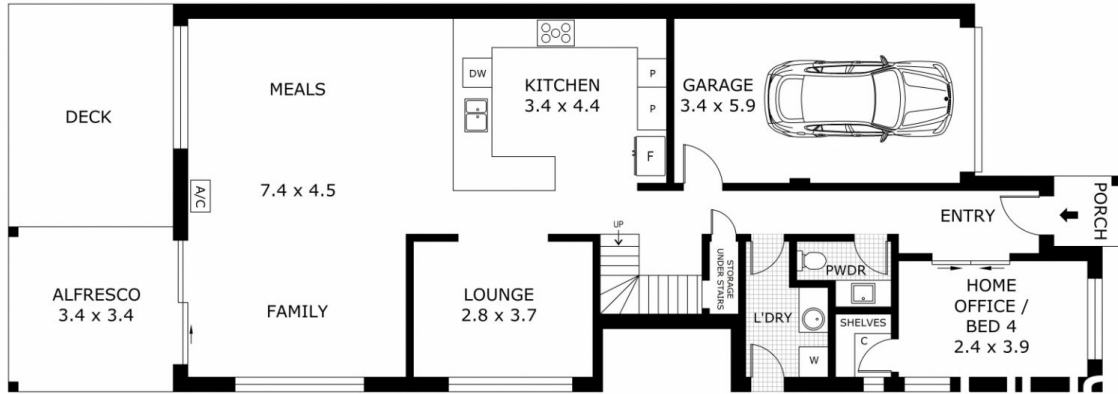
Lisa Totaro
0410 144 215



Cassandra Doria
0497 972 028



FIRST FLOOR



GROUND FLOOR

Disclaimer: All images, views and diagrams are indicative only. Dimensions, areas and landscape are indicative and subject to change without notice. Purchasers should check the plans and specifications included in the terms of the contract of sale carefully prior to signing the contract.