



## 25 Mavi Avenue MELTON VIC

3 2 1

This gorgeous home is nestled in the heart of Melton which offers convenience for all potential buyers. Situated close by to all this community has to offer such as the Melton Botanical Gardens, schooling, shops, recreational reserves, public transport and so much more, this property is the perfect opportunity for first home buyers, investors and downsizers alike.

Upon entering, you are greeted by the master bedroom, bathed in natural light and enhanced by a spacious walk-in robe. The ensuite is a highlight, boasting a large shower, stone benchtop, and an inviting colour scheme. The additional bedrooms are each equipped with built-in robes, and are served by a bright central bathroom that maintains the same high standard as the ensuite.

The central hub of the home features a contemporary

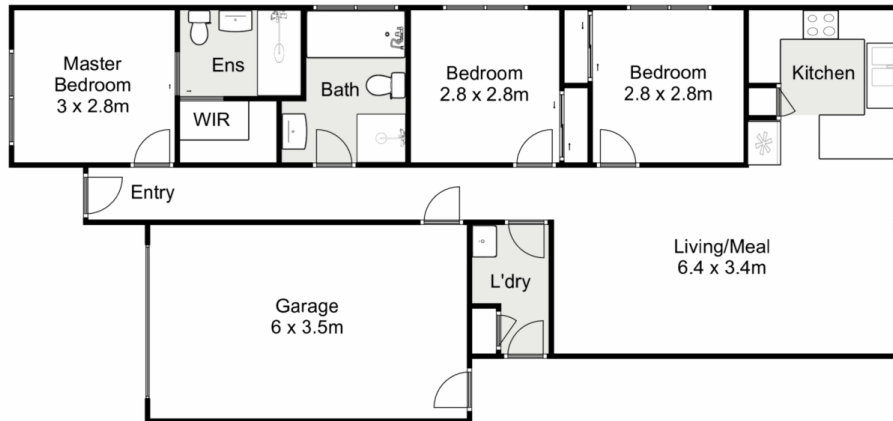
**Price** : \$ 450,000  
**Land Size** : 220 sqm  
**View** : <https://www.ypa.com.au/8212621>



**Kate McGlone**  
0401 853 244



**Shane Spiteri**  
0488 980 115



## 25 Mavi Avenue, Melton

YPA

Whilst every attempt has been made to ensure the accuracy of the floor plan contained here, measurements of doors, windows, rooms and any other items are approximate and no responsibility is taken for any error, omission, or mis-statement. This plan is for illustrative purposes only and should be used as such by any prospective purchaser. The services, systems and appliances shown have not been tested and no guarantee as to their operability or efficiency can be given.

