



## 325 Boundary Road Dromana VIC

3 1 1

Set on a spacious block of approximately 736m<sup>2</sup>, this lovely 3-bedroom beach house offers a relaxed and practical coastal lifestyle. With its light-filled north-facing design and unbeatable location, it's the perfect spot for holidays, weekend getaways, or an entry point into the sought-after Mornington Peninsula property market.

**Price** : \$ 830,000  
**Land Size** : 736 sqm  
**View** : <https://www.ypa.com.au/8211132>

### HOME FEATURES

This older style yet well-maintained home comfortably sleeps up to 10 people, making it ideal for family gatherings or holiday stays. The layout includes three bedrooms, a family bathroom, and a welcoming living area that flows into the dining space. Outdoors, there's plenty of room for kids to play or to entertain guests.

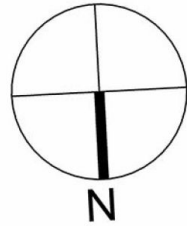
The single garage provides ample storage for beach toys, bikes, and other holiday essentials, while the large block offers flexibility for outdoor activities or potential future



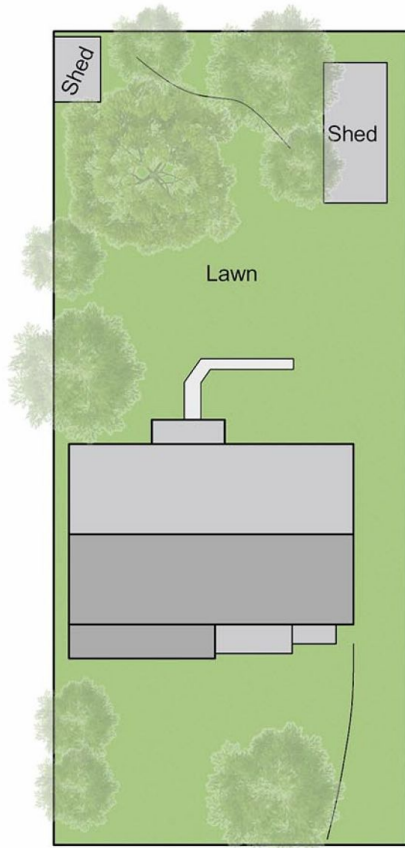
**Elke Remscheid**  
0423 211 315



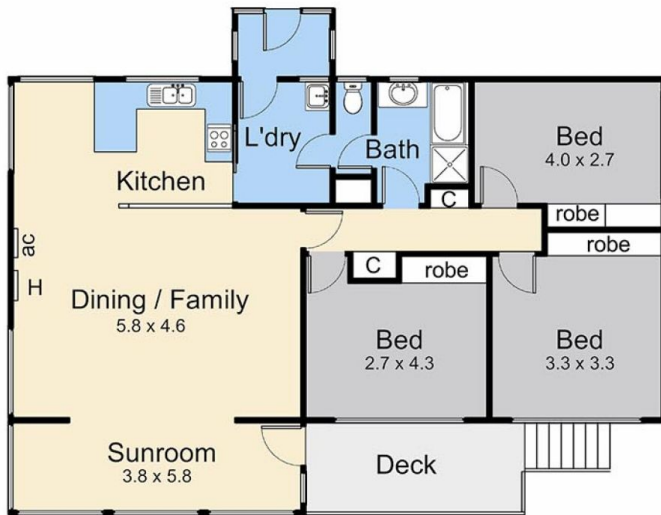
**Ryan Oswald**  
0402 720 822



Internal Living Area  
11.8 squares (approx)



Site Plan



Floor Plan

## 325 Boundary Road, Dromana

This floorplan is for illustration purposes only and no warranty is given to its accuracy. Purchasers are advised to carry out their own investigations. Produced by **realtwriters** (03) 5970 2222