



8 Hargraves Street Aintree VIC

4 2 2

Immaculately maintained, presented to perfection and not to mention the fantastic location with all amenities nearby including Bacchus Marsh Grammar School, Woodlea Town Centre, public transport, Western Highway and walking tracks/reserves/park lands at your fingertips.

Price : \$ 680,000
Land Size : 401 sqm
View : <https://www.ypa.com.au/8207682>

YPA is proud to present this property that offers the perfect combination of practicality and comfort nestled in a highly respected Woodlea Estate and is nothing short of outstanding.

Features include:

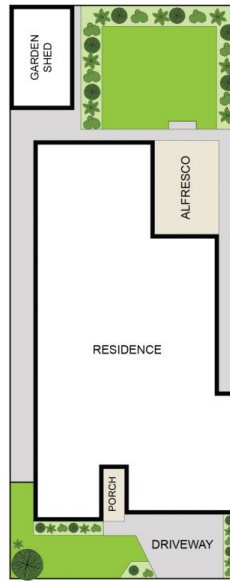
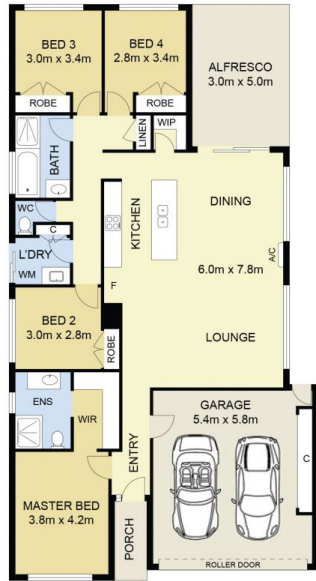
- ? Master bedroom showcases a ceiling fan, walk-in wardrobe and ensuite with stone bench top
- ? Additional three spacious bedrooms with built-in wardrobes (One with ceiling fan)
- ? The kitchen is located perfectly to incorporate the meals



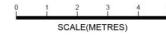
Andrew Migliorisi
0432 526 844



Stephen Azzopardi
0402 012 554



SITE PLAN
(NOT TO SCALE)



8 Hargraves Street, Aintree

DISCLAIMER : ALL DIMENSIONS ARE AN APPROXIMATION ONLY AND NO GUARANTEE IS GIVEN WITH RESPECT TO ACCURACY.