



4 Sheila Mews Darley VIC

4 🏠 2 🚿 3 🚗

Nestled in one of Bacchus Marsh's most sought-after estates, this impressive family home offers space, style, and functionality. Featuring four bedrooms, each with built-in robes (master with walk-in robe and spacious ensuite), this home is perfectly designed for family living. A dedicated study and three generous living areas provide ample room for work, relaxation, and entertaining. The central bathroom is well-appointed, catering to the remaining bedrooms with ease.

The kitchen is a true entertainer's delight, boasting abundant bench space, ample cabinetry, a 900mm oven, a dishwasher, and even a fridge included, making it ready to cater to all your culinary needs. Stepping outside, you'll find a covered, decked entertaining area situated next to the large solar-heated inground pool, creating the perfect setting for year-round gatherings. The garden is a private

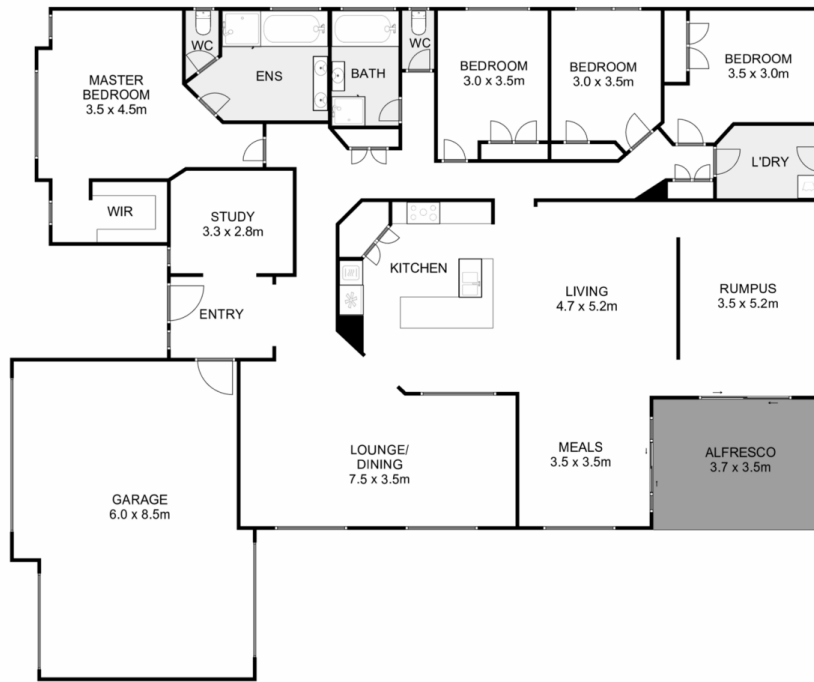
Price : \$ 890,000
Land Size : 900 sqm
View : <https://www.ypa.com.au/8194800>



Jodi Nash
0419 342 120



Bethany Noyce
0427 604 358



4 Sheila Mews, Darley

ypa

Whilst every attempt has been made to ensure the accuracy of the floor plan contained here, measurements of doors, windows, rooms and any other items are approximate and no responsibility is taken for any error, omission, or mis-statement. This plan is for illustrative purposes only and should be used as such by any prospective purchaser. The services, systems and appliances shown have not been tested and no guarantee as to their operability or efficiency can be given.

