



18 Ford Street Rye VIC

5 🛏 3 🚿 7 🚗

BY PRIVATE APPOINTMENT. (Entrance off Murray Street)

Offering truly spectacular, uninterrupted views of Port Phillip Bay, and a lifestyle beyond compare, this extraordinary family residence in the coveted enclave of Rye is an invitation to experience the very pinnacle of coastal luxury. A rare gem that fuses timeless elegance with modern refinement, this home is a sanctuary that promises not only a superior living experience but a connection to the natural landscape that abounds.

Located just 150*m to the warm white sand of the Tyrone Foreshore, and built to exacting standards, every inch of this magnificent home has been thoughtfully crafted to reflect the highest level of design, offering a seamless blend of opulence and contemporary comfort.

From the moment you step through the doors, the space

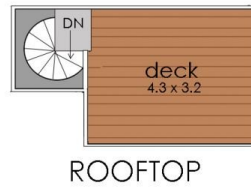
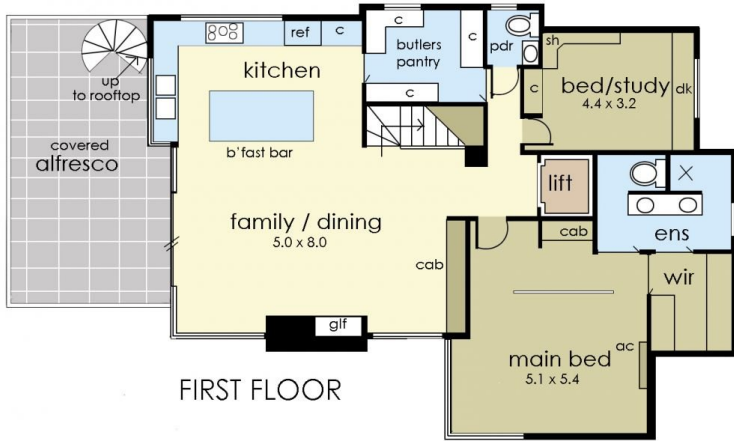
Price : \$3,450,000 - \$3,750,000
Land Size : 1197 sqm
View : <https://www.ypa.com.au/8182720>



Jade Springer
0437 410 791



Ben Nutbean
0413 125 996

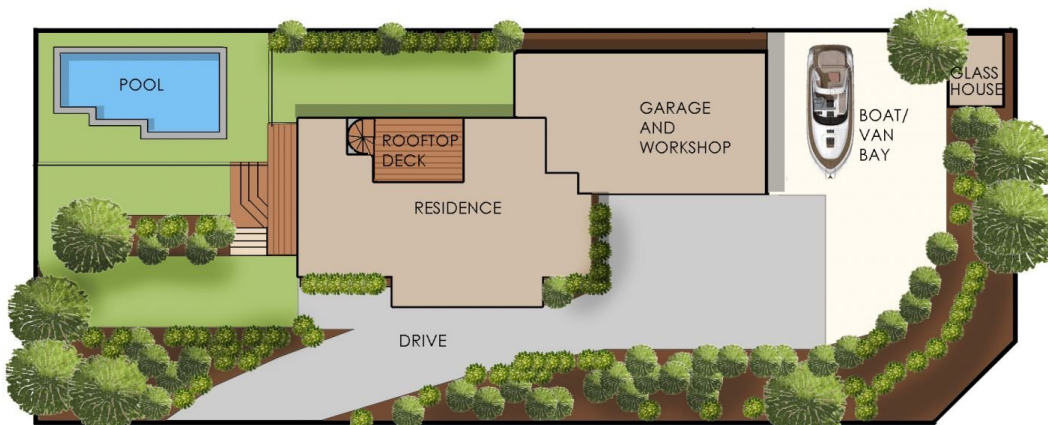


Internal living area including basement approx: 34 squares

Garage and workshop approx: 10.5 squares

Deck, alfresco, rooftop and porch areas approx: 9.5 squares

Total area approx: 54 squares



18 Ford Street, Rye

© Produced by DND Floorplans

Floorplan is a "guide only" for marketing purposes, and not a working drawing. Dimensions are indicative only