



7 Grandview Avenue Rye VIC

3 2 2

Perfectly positioned in a highly sought-after pocket of Rye, just 750 meters* from the pristine shores of Port Phillip Bay, 7 Grandview Avenue offers a rare opportunity to secure a solid coastal home brimming with potential. This original double-story brick residence is set on a substantial and level block of approximately 780*m², presenting the ideal canvas for those looking to create their dream beachside retreat.

Upon entry, you are welcomed by the warmth of timeless hardwood floors that extend throughout the home's upper level, reflecting the enduring craftsmanship of its era. The property features three generous bedrooms, each bathed in natural light, and a central bathroom that serves the home with practicality. The spacious north-facing rear yard is a true highlight, offering ample room for outdoor entertaining, gardening, or even the addition of a pool

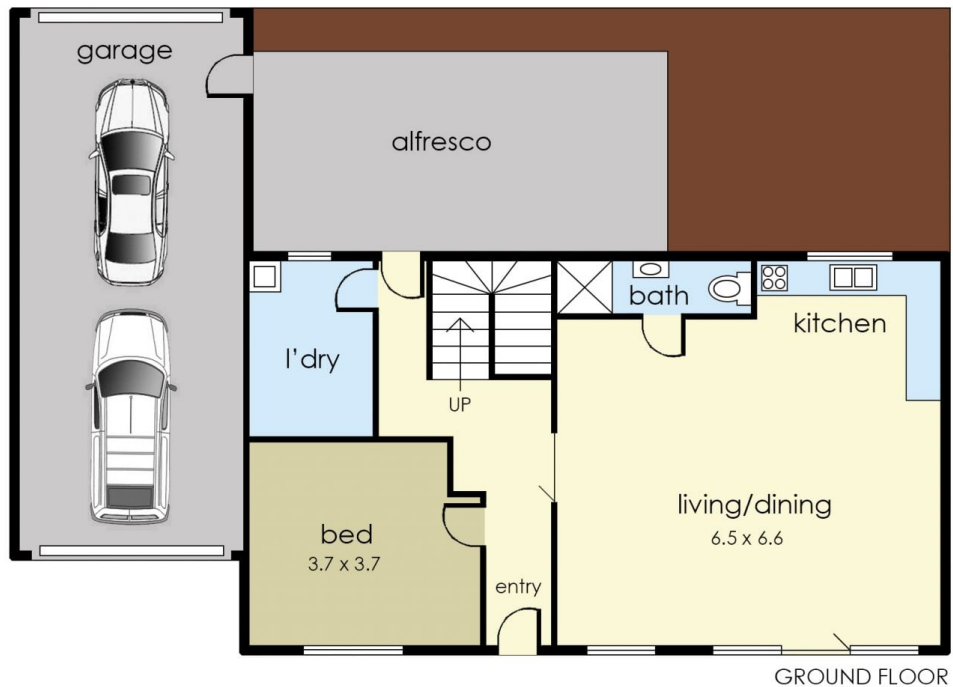
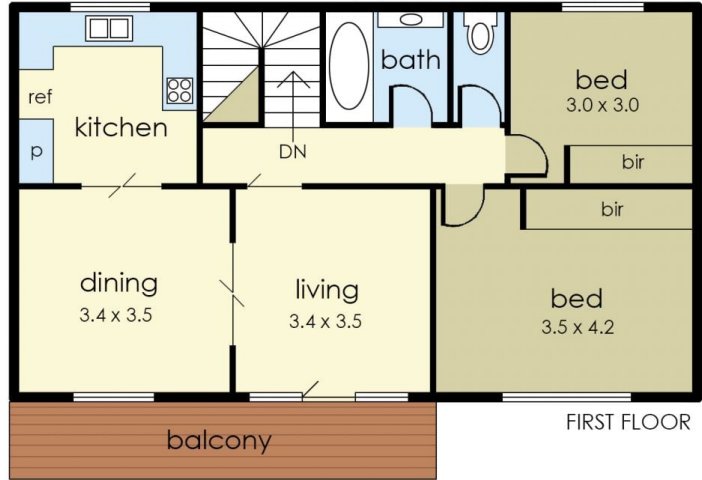
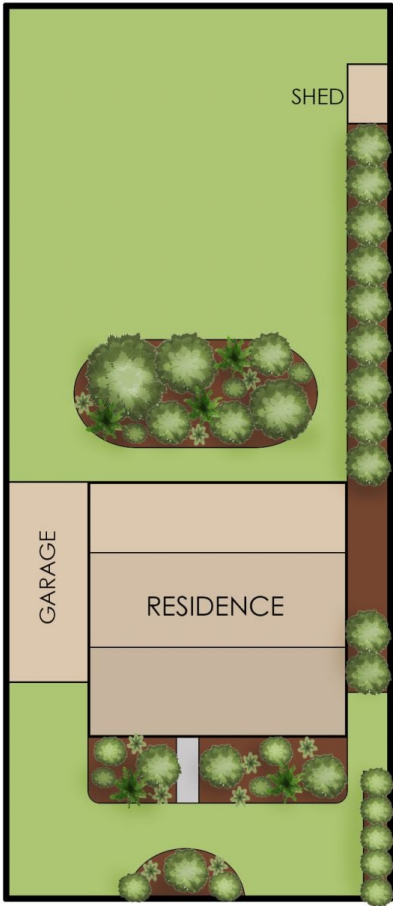
Price : \$ 832,000
Land Size : 780 sqm
View : <https://www.ypa.com.au/8182558>



Katrina Talarico
0420 778 404



Ben Nutbean
0413 125 996



Internal living area
approx: 16 squares

Garage area
approx: 4 squares

Total area
approx: 20 squares

7 Grandview Avenue, Rye

© Produced by DND Floor Plans

This floorplan is for illustration purposes only and no warranty is given to its accuracy. Purchasers are advised to carry out their own investigations.